

Product datasheet for **AP05286PU-N**

Ceramide synthase 1 (CERS1) (non-reactive with GDF1) Rabbit Polyclonal Antibody

Product data:

Product Type:	Primary Antibodies
Applications:	WB
Recommended Dilution:	Western blot (1:400 starting dilution). Positive control: Hypothalamus.
Reactivity:	Human
Host:	Rabbit
Clonality:	Polyclonal
Immunogen:	Synthetic peptide derived from the human Lass1 protein
Specificity:	This antibody only reacts with human Lass1 protein. Does not cross react with other species.
Formulation:	Phosphate buffered saline with 0.08 % sodium azide State: Aff - Purified State: Liquid Ig fraction
Concentration:	lot specific
Purification:	Affinity chromatography
Conjugation:	Unconjugated
Storage:	Store the product (in aliquots) at -20 °C. Can be shipped at 2 - 8 °C. Avoid repeated freezing and thawing.
Stability:	Shelf life: One year from despatch.
Gene Name:	ceramide synthase 1
Database Link:	Entrez Gene 10715 Human P27544



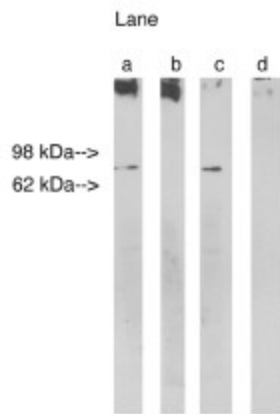
[View online »](#)

Background:

LAG1 is a longevity gene, the first such gene to be identified. Originally cloned from the yeast *Saccharomyces cerevisiae*. A close homolog of this gene, LAC1, has been found in the yeast genome. The human homolog of LAG1 has functions in human aging. LAG1 may be involved in neurodegenerative diseases and human aging. Lass1 may be either a bona fide (dihydro)ceramide synthase or a modulator of its activity. When overexpressed in cells is involved in the production of sphingolipids containing mainly one fatty acid donor (N-linked stearyl- (C18) ceramide) in a fumonisin B1-independent manner. Located in the endoplasmic reticulum membrane; LAss1 is a multi-pass membrane protein.

Synonyms:

LASS1, LAG1, UOG1, LAG1 longevity assurance homolog 1

Product images:

Western blot analysis using Lass 1 at 5 ug/ml on Human Brain lysate 14 ug/lane. Lane A] antibody alone, Lane B] antibody with 45 ug peptide, Lane C] antibody with nonspecific peptide, D]conjugate alone. Visualized using Pierce West Femto substrate system. Anti Rabbit secondary used at 1:3.5K dilution. Exposure for 5 minutes.