

Product datasheet for **AP05284PU-N**

Ceramide synthase 2 (CERS2) Rabbit Polyclonal Antibody

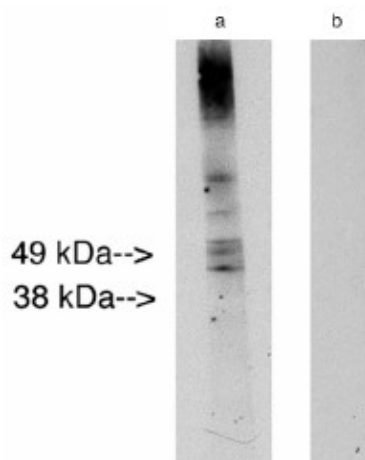
Product data:

Product Type:	Primary Antibodies
Applications:	WB
Recommended Dilution:	Western blot (1:400 starting dilution).
Reactivity:	Human
Host:	Rabbit
Clonality:	Polyclonal
Immunogen:	Synthetic peptide derived from human Lass2 protein
Specificity:	This antibody detects Lass2 expressed in liver and kidney.
Formulation:	Phosphate buffered saline with 0.08 % sodium azide State: Aff - Purified State: Liquid Ig fraction
Concentration:	lot specific
Purification:	Affinity chromatography
Conjugation:	Unconjugated
Storage:	Store the product (in aliquots) at -20 °C. Can be shipped at 2 - 8 °C. Avoid repeated freezing and thawing.
Stability:	Shelf life: One year from despatch.
Gene Name:	ceramide synthase 2
Database Link:	Entrez Gene 29956 Human Q96G23
Background:	LASS2, a human homologue of the yeast longevity assurance gene LAG1 is highly expressed in liver and kidney as compared to the expression of the human LAG1 homologue LAG1Hs-1. LASS2 is located on chromosome 1q11. The LASS2 protein interacts with several membrane-associated receptors or transporters. LASS2 protein inhibits the colony formation of human hepatoma cells in vitro, which suggests that this gene may be involved in the regulation of cell growth.
Synonyms:	LASS2, TMSG1, LAG1 longevity assurance homolog 2, SP260



[View online »](#)

Product images:



Western blot analysis using LAG1 longevity assurance homolog 2 at 10 ug/ml on human placenta lysate 14 ug/lane. Lane A] antibody alone, Lane B] conjugate alone. Visualized using Pierce West Femto substrate system. Anti Rabbit secondary used at 1:10K dilution. Exposure for 5 minutes