

Product datasheet for **AP05283PU-N**

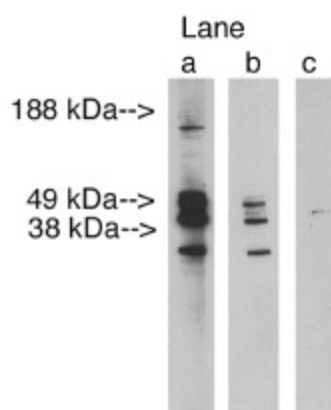
LASS3 (CERS3) Rabbit Polyclonal Antibody

Product data:

Product Type:	Primary Antibodies
Applications:	WB
Recommended Dilution:	Western blot (1:400 starting dilution).
Reactivity:	Human
Host:	Rabbit
Clonality:	Polyclonal
Immunogen:	Synthetic peptide derived from human LASS3 protein
Specificity:	This antibody detects Lass3. Expression of Lass3 appears to be solely limited to the testis.
Formulation:	Phosphate buffered saline with 0.08% sodium azide State: Aff - Purified State: Liquid ig fraction
Concentration:	lot specific
Purification:	Affinity chromatography
Conjugation:	Unconjugated
Storage:	Store the product (in aliquots) at -20 °C. Can be shipped at 2 - 8 °C. Avoid repeated freezing and thawing.
Stability:	Shelf life: One year from despatch.
Gene Name:	ceramide synthase 3
Database Link:	Entrez Gene 204219 Human Q8IU89
Background:	LASS3 (Longevity Assurance homolog 3) is a member of a highly conserved family of proteins from yeast to humans which are involved in the synthesis of ceramide. Overproduction of LASS3 appears to results in increases in several ceramide species, with some preference toward those having middle to long chain fatty acid acyl-CoAs. Also appears to have (dihydro)ceramide synthesis activity. LASS3 expression appears to be limited almost solely to the testis.
Synonyms:	LAG1 longevity assurance homolog 3



[View online »](#)

Product images:


Western blot analysis using LAG1 longevity assurance homolog 3 at 2.5 ug/ml on human testis lysate 14 ug/lane. Lane A] antibody alone, Lane B] antibody blocked with 40 ug blocking peptide. Lane C] conjugate alone. Visualized using Pierce West Femto substrate system. Anti Rabbit secondary used at dilution used 1:3.5K. Exposure for 3 minutes.