

Product datasheet for **AP05282PU-N**

LASS6 (CERS6) Rabbit Polyclonal Antibody

Product data:

Product Type:	Primary Antibodies
Applications:	WB
Recommended Dilution:	Western blot: 1/400 starting dilution.
Reactivity:	Human
Host:	Rabbit
Clonality:	Polyclonal
Immunogen:	Synthetic peptide derived from human Lass6 protein
Specificity:	This antibody detects Lass6, expressed in kidney, liver, brain, heart, placenta and lung.
Formulation:	PBS State: Aff - Purified State: Liquid purified IgG fraction Preservative: 0.08% Sodium Azide
Concentration:	lot specific
Purification:	Antigen Immunoaffinity Chromatography
Conjugation:	Unconjugated
Storage:	Store undiluted at 2-8°C for one month or (in aliquots) at -20°C for longer. Avoid repeated freezing and thawing.
Stability:	Shelf life: one year from despatch.
Gene Name:	ceramide synthase 6
Database Link:	Entrez Gene 253782 Human Q6ZMG9



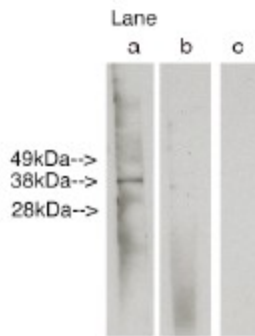
[View online »](#)

Background:

Longevity assurance genes (LAGs) represent a subgroup of the homeobox gene family. Five mammalian homologs have been reported, and the corresponding proteins have previously been investigated with respect to their key role in ceramide synthesis. However, members of the LAG family have been shown to be involved in cell growth regulation and cancer differentiation. May be involved in sphingolipid synthesis or its regulation. Interacts with ATP6V0C, ASGR1, ASGR2 and SLC22A1/OCT1. Localized to nuclear membrane a multi-pass membrane protein, may be expressed on endoplasmic reticulum membrane. Glycosylation on Asn-18 is not necessary for function. Like other LAG family members, the LASS6 protein contained a homeodomain and LAG1 domain. Lass6 displays highest homology to LASS5. The corresponding gene was localized to human chromosome 2q24.3, spanning a rather large genomic region of 318 kb. Sequences in mouse and zebrafish suggested a conservation of LASS6 in vertebrates because the protein and corresponding genomic sequences are highly conserved. LASS6 was shown to be broadly expressed in a wide range of tissues. Recent data suggested a role in cancer differentiation and early embryonic development.

Synonyms:

LAG1 longevity assurance homolog 6

Product images:

Western blot analysis using LAG1 longevity assurance homolog 6 at 6 ug/ml on human Duodenum lysate 14 ug/lane. Lane A] antibody alone, Lane B] antibody plus 50 ug blocking peptide, Lane C] conjugate alone. Visualized using Pierce West Femto substrate system. Anti Rabbit secondary used at 1:3.5K dilution. Exposure for 1.5 minutes.