

## Product datasheet for **AP05280PU-N**

### SPTLC1 Rabbit Polyclonal Antibody

#### Product data:

Product Type:	Primary Antibodies
Applications:	IHC, WB
Recommended Dilution:	<b>Western Blot:</b> (1-5 µg/ml). <b>Immunohistochemistry:</b> (5-10 µg/ml).
Reactivity:	Human
Host:	Rabbit
Isotype:	IgG
Clonality:	Polyclonal
Immunogen:	Synthetic peptide derived from the Human Sserine Palmitoyltransferase enzyme
Specificity:	This antibody detects Serine Palmitoyltransferase 1, ubiquitously expressed.
Formulation:	Phosphate buffered saline with 0.08% Sodium Azide as preservative State: Aff - Purified State: Liquid purified Ig fraction
Concentration:	lot specific
Purification:	Antigen Immunoaffinity Chromatography
Conjugation:	Unconjugated
Storage:	Store undiluted at 2-8°C for one month or (in aliquots) at -20°C for longer. Avoid repeated freezing and thawing.
Stability:	Shelf life: one year from despatch.
Predicted Protein Size:	52.7 kDa
Gene Name:	serine palmitoyltransferase long chain base subunit 1
Database Link:	<a href="#">Entrez Gene 10558 Human O15269</a>



[View online »](#)

**Background:** Sphingolipids play essential roles in various cellular events, including proliferation, differentiation, senescence, apoptosis, and inflammatory responses. Serine palmitoyltransferase (SPT) is the initial and rate-limiting enzyme in the de novo sphingolipid biosynthesis, and thus regulates the level of sphingolipids in cells. Immunohistochemical study revealed widespread distribution of the enzyme with most strong expression in brain and digestive tract. Two subunits, SPT1 and SPT2 at a stoichiometry of 1:1, are involved in the enzymatic activity of SPT.

**Synonyms:** Serine palmitoyltransferase 1, SPT 1, SPT1, LCB 1, LCB1

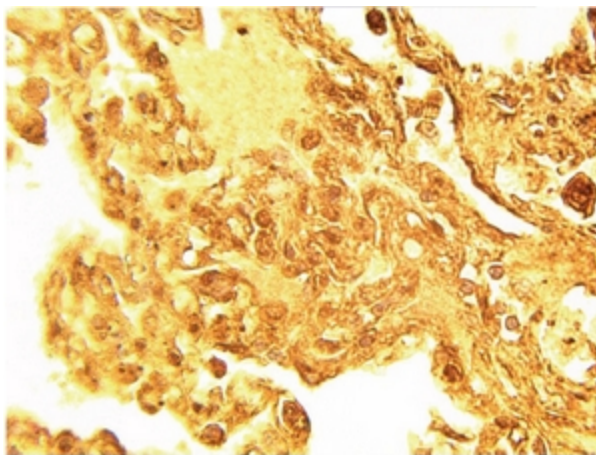
**Protein Families:** Druggable Genome, Transmembrane

**Protein Pathways:** Metabolic pathways, Sphingolipid metabolism

### Product images:



Western blot on human kidney lysate (10 ug/lane) using Serine Palmitoyltransferase 1 antibody at 1 ug/ml. Blot was developed using anti rabbit HRP at 1:75k and Supersignal West Femto. Exposure was 2 minutes.



Immunohistochemical staining of normal Human lung tissue with Serine Palmitoyltransferase 1 antibody at 15 ug/ml.