

Product datasheet for **AP05265PU-N**

SPHK2 (Long Form) Rabbit Polyclonal Antibody

Product data:

Product Type:	Primary Antibodies
Applications:	ELISA, WB
Recommended Dilution:	Western blot: (1-5 µg/ml). Positive control: Jurkat lysate. ELISA.
Reactivity:	Human
Host:	Rabbit
Isotype:	IgG
Clonality:	Polyclonal
Immunogen:	Synthetic peptide derived from the N-terminal extension of the Sphingosine Kinase 2-L protein
Specificity:	This antibody detects Sphingosine Kinase 2 (Long Form).
Formulation:	Phosphate buffered saline with 0.08 % sodium azide State: Aff - Purified State: Liquid Ig fraction
Concentration:	lot specific
Purification:	Ligand affinity chromatography
Conjugation:	Unconjugated
Storage:	Upon arrival, aliquot and freeze at -20°C to -70°C. Avoid repeated freezing and thawing.
Stability:	Shelf life: one year from despatch.
Gene Name:	sphingosine kinase 2
Database Link:	Entrez Gene 56848 Human Q9NRA0



[View online »](#)

Background:

The long form of sphingosine kinase 2 (Sphk2-L) is a species-specific isoform of the Sphk2 enzyme expressed in human but not in mouse. It is an N-terminal extended form of Sphk2, extended by 36 amino acids. It functions as expected, catalyzing the formation of sphingosine 1-phosphate from sphingosine, however it appears to have a decreased ability to inhibit DNA synthesis as compared to Sphk2-S (short form of Sphk2). Under normal cellular conditions, Sphk2-L does not appear to inhibit DNA synthesis, but under serum deprivation, Sphk2-L translocates to the nucleus and accumulates. This accumulation may be involved in the cessation of cell proliferation or apoptosis depending on the cell type.

Synonyms:

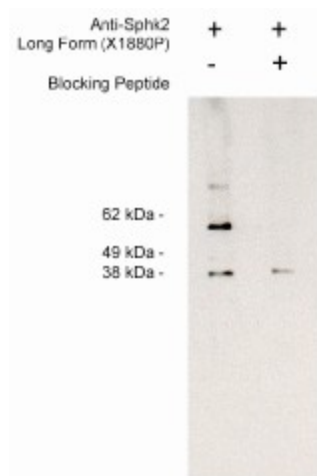
SK2, SPHK2

Protein Families:

Druggable Genome

Protein Pathways:

Calcium signaling pathway, Fc gamma R-mediated phagocytosis, Metabolic pathways, Sphingolipid metabolism, VEGF signaling pathway

Product images:

Western blot of endogenous sphingosine kinase 2 LF detection in Jurkat cell lysate (4 ug/lane) using (1 ug/ml) developed using anti-rabbit HRp (1:75K) and Pierce Super Signal west Femto.