

## Product datasheet for **AP05263PU-N**

### Netrin 1 (NTN1) Rabbit Polyclonal Antibody

#### Product data:

Product Type:	Primary Antibodies
Applications:	WB
Recommended Dilution:	Western blot (0.05-0.5 µg/ml). Positive control: MDCKII cell lysates.
Reactivity:	Bovine, Feline, Human, Monkey, Mouse, Rat
Host:	Rabbit
Isotype:	IgG
Clonality:	Polyclonal
Immunogen:	Synthetic peptide derived from the human Netrin 1 protein.
Specificity:	This antibody detects Netrin 1.
Formulation:	Phosphate buffered saline with 0.08% Sodium Azide as preservative. State: Aff - Purified State: Liquid purified Ig fraction.
Concentration:	lot specific
Purification:	Affinity Chromatography.
Conjugation:	Unconjugated
Storage:	Store the antibody undiluted (in aliquots) at -20°C. Can be shipped at 2-8°C. Avoid repeated freezing and thawing.
Stability:	Shelf life: One year from despatch.
Gene Name:	netrin 1
Database Link:	<a href="#">Entrez Gene 9423 Human</a> <a href="#">O95631</a>



[View online »](#)

**Background:**

Netrins control guidance of CNS commissural axons and peripheral motor axons. Its association with either DCC or some UNC5 receptors will lead to axon attraction or repulsion, respectively. It also serve as a survival factor via its association with its receptors which prevent the initiation of apoptosis. Involved in colorectal tumorigenesis by regulating apoptosis.

Netrin 1's main receptor is DCC (deleted in colorectal cancer- a putative tumor suppressor gene whose expression is lost in numerous cancers). DCC belongs to the so-called family of dependence receptors. These receptors induce apoptosis when their ligand is absent, thus conferring a state of cellular dependence on Netrin 1 availability. The DCC/netrin-1 duo regulates neuron survival during nervous system development.

The mechanism(s) by which Netrin 1/ DCC triggers cell death are still unknown. The localization of DCC to lipid rafts appears to be a prerequisite for its proapoptotic activity.

**Synonyms:**

NTN1, NTN1L

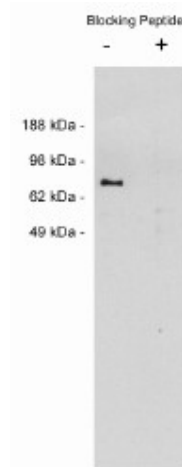
**Product images:**

Figure 1. Western blot using, Rabbit Polyclonal at 0.05 ug/ml on MDCKII cell extract (10 ug/lane). Blots were developed with goat anti rabbit Ig (1:75k) and Pierce's Supersignal West Femto system.