

## Product datasheet for **AP05257PU-N**

### Notum Rabbit Polyclonal Antibody

#### Product data:

Product Type:	Primary Antibodies
Applications:	IHC, WB
Recommended Dilution:	Western blot: 5-10 µg/ml. Immunohistochemistry.
Reactivity:	Human, Mouse
Host:	Rabbit
Isotype:	IgG
Clonality:	Polyclonal
Immunogen:	Recombinant full-length notum protein from Mouse
Specificity:	This antibody detects Notum.
Formulation:	Phosphate buffered saline with 0.08% Sodium Azide as preservative State: Purified State: Liquid purified Ig fraction
Concentration:	lot specific
Conjugation:	Unconjugated
Storage:	Store the product (in aliquots) at -20°C. Can be shipped at 2-8°C. Avoid repeated freezing and thawing.
Stability:	Shelf life: One year from despatch.
Gene Name:	notum pectinacetylerase homolog (Drosophila)
Database Link:	<a href="#">Entrez Gene 77583 Mouse Q8R116</a>



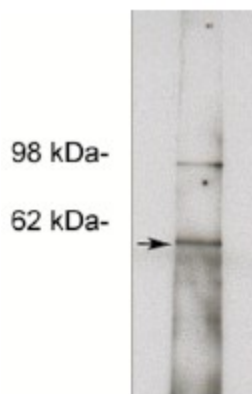
[View online »](#)

**Background:**

Genetic studies in *Drosophila* have revealed a novel secreted antagonist for Wingless (Wg) signaling, referred to as Notum/Wingful (Wf). Wf/Notum encodes a protein of 430 amino acid residues, which is related to plant pectin acetylsterases of the alpha/beta-hydrolase superfamily. The main target of Notum action appears to be cell surface proteoglycans Dally and/or Dally-like (Dlp). Notum governs the extracellular Wg morphogen distribution via Dally and Dlp. Also, like some vertebrate Wnt antagonists, notum expression is activated by Wg signaling, revealing the existence of a feedback control mechanism in which Wg modifies its own gradient distribution. In vertebrate, proteoglycans related to Dally and Dlp likely play important roles in Wnt signaling which encodes a glypican that is required for Wnt-11 signaling. A single ortholog of Notum exists in the mouse and the human genome, implying that a similar regulatory mechanism may exist in vertebrates.

**Synonyms:**

NOTUM

**Product images:**

Western blot of HepG2 cell lysate (11 ug/lane) using (10 ug/ml). Blots were developed with anti Rabbit HRP 1:100k and using Pierce Super Signal West Femto.