

## Product datasheet for **AP05255PU-N**

### Sphk1 pSer225 Rabbit Polyclonal Antibody

#### Product data:

Product Type:	Primary Antibodies
Applications:	WB
Recommended Dilution:	<b>Western Blot:</b> 1-5 µg/ml.
Reactivity:	Mouse
Host:	Rabbit
Isotype:	IgG
Clonality:	Polyclonal
Immunogen:	A synthetic peptide incorporating the Serine 225 phosphorylation site of Mouse Sphingosine kinase 1
Specificity:	This antibody detects Sphingosine Kinase 1 (pSer225). Antibody shows some cross reactivity (~10% by ELISA) with other phosphoserine containing proteins.
Formulation:	PBS State: Aff - Purified State: Liquid purified Ig fraction Stabilizer: 0.08% sodium azide.
Concentration:	lot specific
Purification:	Antigen Immunoaffinity Purification
Conjugation:	Unconjugated
Storage:	Upon receipt, store undiluted (in aliquots) at -20°C. Avoid repeated freezing and thawing.
Stability:	Shelf life: One year from despatch.
Gene Name:	sphingosine kinase 1
Database Link:	<a href="#">Entrez Gene 20698 Mouse Q8CI15</a>



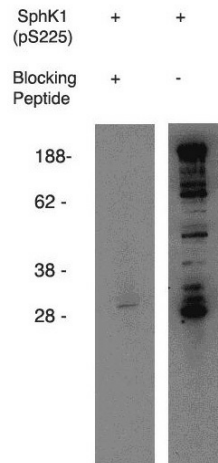
[View online »](#)

**Background:**

Activation of Sphingosine kinase (Sphk) increases the bioactive lipid, sphingosine 1-phosphate (S1P) and has been observed in a variety of cancer cells. Phosphorylation of sphingosine by sphingosine kinase (Sphk) is the rate-limiting step in the cellular synthesis of S1P. A principle activation event is the phosphorylation of serine 225 of sphingosine kinase 1. Inhibition of Sphk1 phosphorylation and hence, Sphk activity is an important target for the development of drugs for cancer, inflammation, cardioprotection as well as a many other indications.

**Synonyms:**

SPHK, SPK, SPK 1, SPK-1

**Product images:**


Western blot using anti-Mouse SphK1 (pS225) on Mouse B-cell lysate. Antibody used at 1 ug/ml with phosphorylated blocking peptide (Lane A) and without (Lane B).