

Product datasheet for **AP05254PU-N**

Sphk1 (Long Form) Rabbit Polyclonal Antibody

Product data:

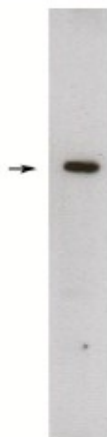
Product Type:	Primary Antibodies
Applications:	WB
Recommended Dilution:	Western Blot: (1-5 µg/ml). Antibody has been tested on rat kidney lysate.
Reactivity:	Rat
Host:	Rabbit
Clonality:	Polyclonal
Immunogen:	Synthetic peptide derived from the rat sphingosine kinase 1, long form, protein
Specificity:	This antibody detects Sphingosine Kinase 1 (Long Form).
Formulation:	Phosphate buffered saline with 0.08 % sodium azide State: Aff - Purified State: Liquid Ig fraction
Concentration:	lot specific
Purification:	Affinity chromatography
Conjugation:	Unconjugated
Storage:	Ship on dry ice. Upon arrival, aliquot and store frozen at -20°C to -70°C. Avoid repeated freezing and thawing.
Stability:	Shelf life: one year from despatch.
Gene Name:	sphingosine kinase 1
Database Link:	Entrez Gene 170897 Rat Q91V26
Background:	Rat sphingosine kinase 1 catalyzes the phosphorylation of sphingosine to form sphingosine 1-phosphate (spp)(sphingosine + ATP = sphingosine 1-phosphate + ADP), a lipid mediator with both intra- and extracellular functions. also acts on d-erythro-sphingosine and to a lesser extent sphinganine, but not other lipids, such as d,l-threo-dihydrosphingosine, n,n-dimethylsphingosine, diacylglycerol, ceramide, or phosphatidylinositol. The long form of sphingosine kinase 1, an N-terminal extension, is responsible for FcεRI-mediated calcium mobilization and may play a role in other ligand mediated signaling events.



[View online »](#)

Synonyms: SPHK, SPK, SPK 1, SPK-1

Product images:



Western blot of rat kidney lysate (10 ug/lane), detection of endogenous Sphingosine kinase 1, long form using (1 ug/ml), HRP anti-rabbit was used at 1:75k, and developed with Pierce's Super Signal West Femto.