

Product datasheet for **AP05209PU-N**

SAMD8 Rabbit Polyclonal Antibody

Product data:

Product Type:	Primary Antibodies
Applications:	ELISA, WB
Recommended Dilution:	ELISA. Western Blot: 5-10 µg/ml.
Reactivity:	Human
Host:	Rabbit
Clonality:	Polyclonal
Immunogen:	Full-length recombinant sphingomyelin synthase r fusion protein.
Specificity:	This antibody reacts to Sphingomyelin synthase-related protein 1.
Formulation:	Phosphate buffered saline with 0.08% Sodium Azide as preservative. State: Purified State: Liquid purified Ig fraction.
Concentration:	lot specific
Conjugation:	Unconjugated
Storage:	The antibody can be shipped at ambient temperature. Store (in aliquots) at -20°C only. Avoid repeated freezing and thawing.
Stability:	Shelf life: one year from despatch.
Gene Name:	sterile alpha motif domain containing 8
Database Link:	Entrez Gene 142891 Human Q96LT4



[View online »](#)

Background:

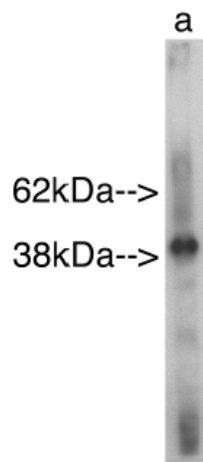
Sphingomyelin (SM) is a major component of animal plasma membranes. Its production involves the transfer of phosphocholine from phosphatidylcholine and then onto ceramide. This also yields diacylglycerol as a side product. The reaction is catalysed by SM synthase, an important enzyme in the regulation of diacylglycerol and ceramide as anti- and proapoptotic stimuli. SM synthesis occurs in the lumen of the Golgi as well as on or at the cell surface. It is uncertain which SM enzyme forms are present at these different cellular locations. Human, mouse and *Caenorhabditis elegans* genomes each contain at least two different SM synthase (SMS) genes. Human SMS1 is localised to the Golgi, SMS2 resides primarily at the plasma membrane.

Synonyms:

FLJ25082; SMSr

Protein Families:

Transmembrane

Product images:

Western blot analysis using Sphingomyelin Synthase r on recombinant protein (Lane A) antibody alone. Anti Rabbit secondary used at 1/25K Exposure for 30 seconds.