

Product datasheet for **AP05205PU-N**

UGT8 Rabbit Polyclonal Antibody

Product data:

Product Type:	Primary Antibodies
Applications:	ELISA, WB
Recommended Dilution:	ELISA. Western Blot: 5-10 µg/ml. <i>Positive Control:</i> Found in all tissues examined.
Reactivity:	Human
Host:	Rabbit
Clonality:	Polyclonal
Immunogen:	Synthetic peptide derived from Human Ceramide Glycosyltransferase Protein
Specificity:	This antibody recognizes Human Ceramide Glycosyltransferase. Other species not tested.
Formulation:	PBS State: Purified State: Liquid purified Ig fraction Preservative: 0.08% Sodium Azide
Concentration:	lot specific
Purification:	Ammonium Sulfate Precipitation
Conjugation:	Unconjugated
Storage:	Upon receipt, store undiluted (in aliquots) at -20°C. Avoid repeated freezing and thawing.
Stability:	Shelf life: one year from despatch.
Gene Name:	UDP glycosyltransferase 8
Database Link:	Entrez Gene 7368 Human Q16880
Background:	May serve as a flippase as well as a glucosyltransferase that transfers glucose to ceramide. It Catalyzes; UDP-glucose + Nacylsphingosine = UDP + D-glucosyl-N-acylsphingosine. Ceramide Glycosyltransferase is the first step in the Glycosphingolipid synthesis; first glycosylation step. Glucosylceramide synthase (GlcT) and lactosylceramide synthase (GalT) are key enzymes for the synthesis of major glycosphingolipids of vertebrates.



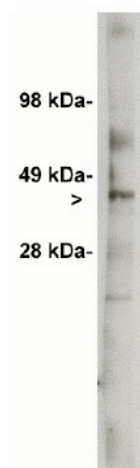
[View online »](#)

Synonyms: UDP-galactose-ceramide galactosyltransferase, Ceramide UDP-galactosyltransferase, Cerebroside synthase, CGT

Protein Families: Transmembrane

Protein Pathways: Metabolic pathways, Sphingolipid metabolism

Product images:



Western blot analysis using Ceramide Glycosyltransferase antibody on 7 ug of rat kidney lysate. Antibody used at 1 ug/ml. Visualized using Pierce West Femto substrate system. Secondary used at 1:75k dilution. Exposure for 60 seconds.