

## Product datasheet for **AP05178PU-N**

### ENPP2 Rabbit Polyclonal Antibody

#### Product data:

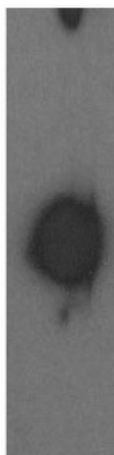
Product Type:	Primary Antibodies
Applications:	ELISA, WB
Recommended Dilution:	Western Blot: 5 - 10 µg/ml. Enzyme Immunoassay.
Reactivity:	Human
Host:	Rabbit
Isotype:	IgG
Clonality:	Polyclonal
Immunogen:	Synthetic peptide derived from the autotaxin protein
Specificity:	This antibody reacts to Autotaxin.
Formulation:	Phosphate buffered saline with 0.08% sodium azide State: Purified State: Liquid purified Ig
Concentration:	lot specific
Conjugation:	Unconjugated
Storage:	The antibody can be shipped at ambient temperature. Store (in aliquots) at -20°C only. Avoid repeated freezing and thawing.
Stability:	Shelf life: one year from despatch.
Gene Name:	ectonucleotide pyrophosphatase/phosphodiesterase 2
Database Link:	<a href="#">Entrez Gene 5168 Human Q13822</a>
Background:	Autotaxin (ATX), a tumor cell motility- stimulating protein is an ecto/exo-enzyme with significant homology to the plasma cell membrane differentiation antigen PC-1. ATX is a 99kDa core protein and may run as a 125-kDa glycoprotein when isolated from the human melanoma cell line (A2058). ATX, like PC-1 can hydrolyze the type I phosphodiesterase substrate p-nitrophenyl thymidine-5'-monophosphate. Autotaxin has a novel motilityregulating function for this class of ecto/exo-enzymes.
Synonyms:	E-NPP 2, ENPP2, ATX, PDNP2



[View online »](#)

**Product images:**

MW 99-



Western blot analysis using autotaxin antibody on human brain lysate.