

## Product datasheet for **AP05176PU-N**

### Phosphatidic acid phosphatase type 2B (PLPP3) Rabbit Polyclonal Antibody

#### Product data:

Product Type:	Primary Antibodies
Applications:	ELISA, WB
Recommended Dilution:	Western Blot. Enzyme Immunoassay.
Reactivity:	Human, Mouse, Rat
Host:	Rabbit
Isotype:	IgG
Clonality:	Polyclonal
Immunogen:	Synthetic peptide derived from the phosphatidic acid phosphatase 2B protein
Specificity:	This antibody reacts to Phosphatidic Acid Phosphatase 2B .
Formulation:	Phosphate buffered saline with 0.08% sodium azide State: Aff - Purified State: Liquid purified IgG
Concentration:	lot specific
Conjugation:	Unconjugated
Storage:	Ship on dry ice. Store (in aliquots) at -20°C to -70°C. Avoid repeated freezing and thawing.
Stability:	Shelf life: one year from despatch.
Gene Name:	phospholipid phosphatase 3
Database Link:	<a href="#">Entrez Gene 8613 Human O14495</a>



[View online »](#)

**Background:**

Vascular endothelial growth factor and type I collagen inducible protein (VCIP), also known as phosphatidic acid phosphatase 2b (PAP2b), was originally identified in a functional assay of angiogenesis. VCIP/PAP2b exhibits an Arg - Gly - Asp (RGD) cell adhesion sequence. Immunoprecipitation and fluorescence-activated cell sorting analyses demonstrated that VCIP-RGD is exposed to the outside of the cell surface. Retroviral transduction of VCIP can induce cell aggregation and cell-cell interactions, modestly increase p120 catenin expression and promote activation of the Fak, Akt and GSK3 $\beta$  protein kinases. Expression of VCIP promoted adhesion, spreading and tyrosine phosphorylation of Fak, Shc, Cas and paxillin in endothelial cells. PAP2b/VCIP is expressed in close proximity to vascular endothelial growth factor, von Willebrand factor and  $\alpha$ v $\beta$ 3 integrin in tumor vasculatures.

**Synonyms:**

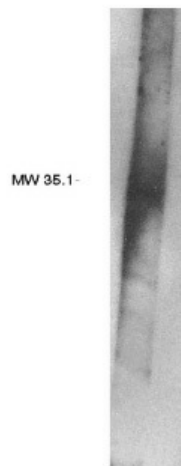
PAP2-beta, PAP2B, VCIP

**Protein Families:**

Druggable Genome, Transmembrane

**Protein Pathways:**

Ether lipid metabolism, Fc gamma R-mediated phagocytosis, Glycerolipid metabolism, Glycerophospholipid metabolism, Metabolic pathways, Sphingolipid metabolism

**Product images:**

Western blot analysis using PAP2B antibody on human brain lysate.