

Product datasheet for **AP05175PU-N**

PPAP2C (PLPP2) Rabbit Polyclonal Antibody

Product data:

Product Type:	Primary Antibodies
Applications:	ELISA, WB
Recommended Dilution:	Western Blot. Enzyme Immunoassay.
Reactivity:	Human, Porcine
Host:	Rabbit
Isotype:	IgG
Clonality:	Polyclonal
Immunogen:	Synthetic peptide derived from the lipid phosphate phosphohydrolase 2 protein
Specificity:	This antibody reacts to Lipid Phosphate Phosphohydrolase 2.
Formulation:	Phosphate buffered saline with 0.08% sodium azide State: Aff - Purified State: Liquid purified Ig
Concentration:	lot specific
Conjugation:	Unconjugated
Storage:	Ship on dry ice. Store (in aliquots) at -20°C to -70°C. Avoid repeated freezing and thawing.
Stability:	Shelf life: one year from despatch.
Gene Name:	phospholipid phosphatase 2
Database Link:	Entrez Gene 8612 Human O43688
Background:	Phosphatidic acid (PA), lysophosphatidic acid, ceramide 1-phosphate (C1P), and sphingosine 1-phosphate (S1P) are lipid mediators generated by phospholipases, sphingomyelinases, and lipid kinases. The major pathway for degradation of these lipids is dephosphorylation catalyzed by members of two classes (types 1 and 2) of phosphohydrolase activities (PAPs). cDNAs encoding two type 2 PAPs, PAP-2a and -2b, have been expressed by transient transfection and shown to catalyze hydrolysis of PA, C1P, and S1P.
Synonyms:	PAP2-gamma

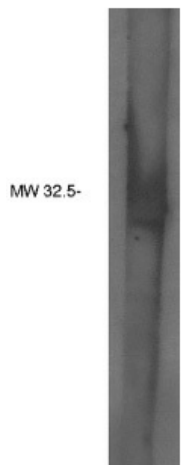


[View online »](#)

Protein Families: Druggable Genome, Stem cell - Pluripotency, Transmembrane

Protein Pathways: Ether lipid metabolism, Fc gamma R-mediated phagocytosis, Glycerolipid metabolism, Glycerophospholipid metabolism, Metabolic pathways, Sphingolipid metabolism

Product images:



Western blot analysis using Pan PPAP antibody on human brain lysate.