

## Product datasheet for **AP05170PU-N**

### Sphingosine 1 phosphate phosphatase 2 (SGPP2) Rabbit Polyclonal Antibody

#### Product data:

Product Type:	Primary Antibodies
Applications:	WB
Recommended Dilution:	Western Blot: 1:400; Tissue lysate should be used at 10 - 50 µg/lane.
Reactivity:	Human
Host:	Rabbit
Clonality:	Polyclonal
Immunogen:	Synthetic peptide derived from the sphingosine 1-phosphate phosphatase 2 protein.
Specificity:	This antibody reacts to Sphingosine 1-Phosphate Phosphatase 2.
Formulation:	Phosphate buffered saline with 0.08% sodium azide State: Aff - Purified State: Liquid purified
Concentration:	lot specific
Conjugation:	Unconjugated
Storage:	Ship on dry ice. Store (in aliquots) at -20°C only. Avoid repeated freezing and thawing.
Stability:	Shelf life: one year from despatch.
Gene Name:	sphingosine-1-phosphate phosphatase 2
Database Link:	<a href="#">Entrez Gene 130367 Human Q8IWX5</a>
Background:	Sphingosine 1-phosphate (S1P) is a highly bioactive lipid that has a myriad of biological effects both intracellularly as a second messenger and extracellularly by binding to the S1P(1 - 5)/Gprotein-coupled receptors of the endothelial differentiation gene family. Intracellularly, at least two enzymes, sphingosine kinase (1 and 2) and S1P phosphatase, regulate the activity of S1P by governing the phosphorylation of S1P. SPPase2 is localized to the endoplasmic reticulum. The enzymatic activity and localization of SPPase2 are similar to SPPase1. The tissue expression of SPPase2 was different from that of SPPase1. SPPase2 is an important member of the SPPase family which play a role in attenuating intracellular S1P signaling.
Synonyms:	Sphingosine-1-phosphatase 2, SPPase2

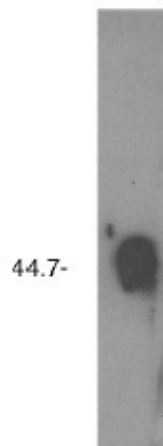


[View online »](#)

Protein Families: Transmembrane

Protein Pathways: Sphingolipid metabolism

## Product images:



Western blot analysis using S1P Phosphatase 2 antibody on human brain lysate.