

## Product datasheet for **AP05168PU-N**

### SGPL1 Rabbit Polyclonal Antibody

#### Product data:

Product Type:	Primary Antibodies
Applications:	WB
Recommended Dilution:	<b>Western Blot:</b> 1/400. <b>Positive Control:</b> Madin-Darby Bovine Kidney (MDBK) cell lysate.
Reactivity:	Bovine, Human, Mouse, Rat
Host:	Rabbit
Isotype:	IgG
Clonality:	Polyclonal
Immunogen:	Synthetic peptide derived from the sphingosine 1-phosphate lyase 1 protein.
Specificity:	This antibody recognizes Sphingosine 1-Phosphate Lyase 1.
Formulation:	PBS State: Aff - Purified State: Liquid purified IgG fraction Preservative: 0.08% Sodium Azide
Concentration:	lot specific
Purification:	Antigen Immunoaffinity Chromatography
Conjugation:	Unconjugated
Storage:	Upon receipt, store undiluted (in aliquots) at -20°C. Avoid repeated freezing and thawing.
Stability:	Shelf life: one year from despatch.
Gene Name:	sphingosine-1-phosphate lyase 1
Database Link:	<a href="#">Entrez Gene 20397 Mouse</a> <a href="#">Entrez Gene 286896 Rat</a> <a href="#">Entrez Gene 8879 Human</a> <a href="#">O95470</a>



[View online »](#)

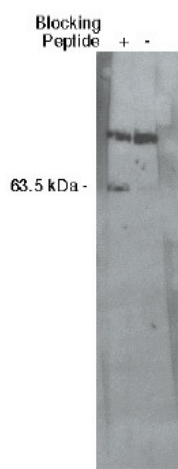
**Background:** Sphingosine-1-phosphate lyase cleaves phosphorylated sphingoid bases, such as sphingosine-1-phosphate, into fatty aldehydes and phosphoethanolamine. Elevates stress-induced ceramide production and apoptosis. The catalytic activity of sphingosine 1-phosphate lyase converts sphingosine 1-phosphate to phosphoethanolamine and palmitaldehyde using Pyridoxal phosphate as a co-factor. Sphingosine 1-phosphate lyase is a type III membrane protein found in the endoplasmic reticulum. Sphingosine 1-phosphate lyase is found primarily in the liver and kidney. Sphingosine 1-phosphate lyase belongs to the group II decarboxylase family.

**Synonyms:** SP-lyase 1, SPL 1, Sphingosine-1-phosphate aldolase, Sphingosine-1-phosphate lyase 1, KIAA1252

**Protein Families:** Druggable Genome

**Protein Pathways:** Metabolic pathways, Sphingolipid metabolism

### Product images:



Western blot analysis using S1P lyase 1 antibody at a dilution of 1:400 on MDBK cell lysate using mouse anti-rabbit HRP secondary antibody at 1:75,000.