

Product datasheet for **AP05167PU-N**

SPHK2 Rabbit Polyclonal Antibody

Product data:

Product Type:	Primary Antibodies
Applications:	ELISA, WB
Recommended Dilution:	Western Blot: 1:200. ELISA. Positive Control: Active Recombinant Sphingosine Kinase Enzyme.
Reactivity:	Human, Mouse, Rat
Host:	Rabbit
Isotype:	IgG
Clonality:	Polyclonal
Immunogen:	Synthetic peptide derived from the C-terminal of Sphingosine Kinase 2
Specificity:	This antibody reacts to SPHK2.
Formulation:	Phosphate buffered saline with 0.08% sodium azide State: Aff - Purified State: Liquid purified Ig
Concentration:	lot specific
Conjugation:	Unconjugated
Storage:	The antibody can be shipped on dry ice. Store (in aliquots) at -20°C only. Avoid repeated freezing and thawing.
Stability:	Shelf life: one year from despatch.
Gene Name:	sphingosine kinase 2
Database Link:	Entrez Gene 56632 Mouse Entrez Gene 308589 Rat Entrez Gene 56848 Human Q9NRA0



[View online »](#)

Background:

Sphingosine Kinase 2 (Sphk2) catalyzes the phosphorylation of sphingosine to sphingosine 1-phosphate (S1P), an important signaling molecule with intra- and extracellular functions. Inside the cell S1P acts as a signaling molecule like other sphingolipid metabolites like ceramide and sphingosine. S1P has been implicated in regulating cell differentiation, calcium mobilization from intracellular stores, and apoptosis. The cell surface receptors for S1P are the EDG family of G protein-coupled receptors (S1P Receptors). These receptors couple to multiple G proteins (e.g. S1P1 couples to Gi whereas S1P2 and S1P3 couple to Gq, G13 in addition to Gi) and regulate a extremely wide range of cellular events including cell motility, survival, apoptosis, migration and cell-cell interaction. Important roles for S1P have also been reported in regulation of cardiogenesis, vascular maturation, oocyte survival, immune cell trafficking, cells of the neuronal system and bone cells. S1P levels are regulated by the activity of Sphk (Sphk1 and Sphk2).

Synonyms:

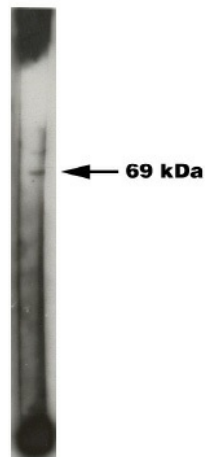
SK2, SPHK2

Protein Families:

Druggable Genome

Protein Pathways:

Calcium signaling pathway, Fc gamma R-mediated phagocytosis, Metabolic pathways, Sphingolipid metabolism, VEGF signaling pathway

Product images:

Western blot analysis using Sphingosine Kinase 2 antibody on 50 ng of recombinant Sphingosine Kinase 2 enzyme. Antibody used at 1:200 dilution. Visualized using Pierce West Femto substrate system. Secondary used at 1:30k dilution. Exposure for 45 seconds.