

## Product datasheet for **AP05162PU-N**

### GNB5 Rabbit Polyclonal Antibody

#### Product data:

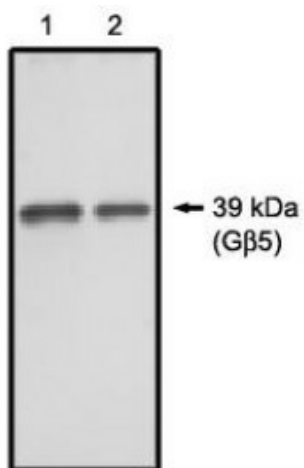
Product Type:	Primary Antibodies
Applications:	WB
Recommended Dilution:	Western Blot: 5 - 10 µg/ml.
Reactivity:	Human, Mouse, Rat
Host:	Rabbit
Isotype:	IgG
Clonality:	Polyclonal
Immunogen:	Unique peptide sequence derived from the D1 blade of the Gbeta5 protein.
Specificity:	This antibody reacts to Gbeta5-D1.
Formulation:	Phosphate buffered saline with 0.08% sodium azide State: Purified State: Liquid purified Ig
Concentration:	lot specific
Conjugation:	Unconjugated
Storage:	The antibody can be shipped at ambient temperature. Store (in aliquots) at -20°C only. Avoid repeated freezing and thawing.
Stability:	Shelf life: one year from despatch.
Gene Name:	G protein subunit beta 5
Database Link:	<a href="#">Entrez Gene 10681 Human O14775</a>
Background:	The Gbeta5 protein is a G protein subunit present predominantly in the central nervous system. This protein appears to be expressed in two forms, one found in the brain of 39 kDa and one found in the retina of 44 kDa. It has also been found that Gbeta5 associates tightly with RGS7, a member of the superfamily of negative regulators of G protein signaling. These complexes have been localized to most regions of the brain, whereas Gbeta1-4 exhibit no observable colocalization with RGS7, despite their widespread codistribution throughout similar neuronal networks. This antibody is specific for a peptide sequence within the D1 blade which is not found in the Gbeta's 1 - 4.



[View online »](#)

Synonyms: Gbeta5

**Product images:**



Western blot analysis using Gbeta5 antibody on 20 ng (1) and 10 ng (2) purified Gbeta5 protein.