

Product datasheet for **AP05151PU-N**

EDG4 (LPAR2) Rabbit Polyclonal Antibody

Product data:

Product Type:	Primary Antibodies
Applications:	WB
Recommended Dilution:	Western Blot: 5-10 µg/ml. Should be visualized using a high sensitivity secondary/substrate system. Positive Control: RH7777 cells transfected with EDG4 protein.
Reactivity:	Human
Host:	Rabbit
Isotype:	IgG
Clonality:	Polyclonal
Immunogen:	Antibody raised against a unique synthetic peptide derived from the N-terminal of the Human EDG4 protein.
Specificity:	This antibody recognizes Human EDG-4 / LPA2. Other species not tested.
Formulation:	PBS State: Purified State: Liquid purified IgG fraction Preservative: 0.08% Sodium Azide
Concentration:	lot specific
Purification:	Ammonium Sulfate Precipitation
Conjugation:	Unconjugated
Storage:	Upon receipt, store undiluted (in aliquots) at -20°C. Avoid repeated freezing and thawing.
Stability:	Shelf life: one year from despatch.
Gene Name:	lysophosphatidic acid receptor 2
Database Link:	Entrez Gene 9170 Human Q9HBW0



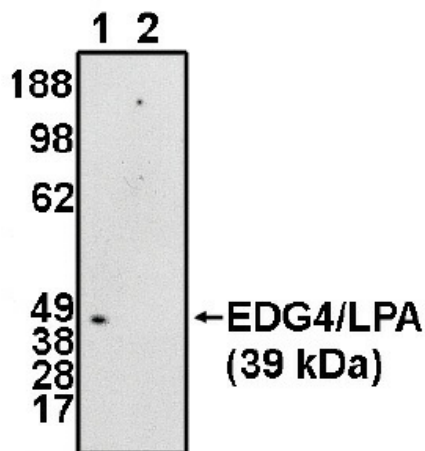
[View online »](#)

Background:

EDG4 belongs to a family of G-protein coupled receptors whose ligands are lysophospholipids. The ligand for EDG4 is lysophospholipid. There are 6 known members of the EDG receptor family and they are implicated in mediating growth-related effects such as induction of cellular proliferation, alterations in differentiation and survival and suppression of apoptosis. They also evoke cellular effector functions that are dependent on cytoskeletal responses such as contraction, secretion, adhesion and chemotaxis. EDG receptors are developmentally regulated and differ in tissue distribution. They couple to multiple types of G proteins to signal through ras and MAP kinase, rho, phospholipase C and several protein tyrosine kinases. EDG4 is expressed in testes, ovarian tumor and leukocyte containing tissues.

Synonyms:

EDG4, LPAR2, lpa-2

Product images:


Western blot analysis using EDG4/LPA2 (NT) antibody at 5 ug/ml on RH7777 cells transfected with EDG4/LPA2 protein in the absence (1) and presence (2) of blocking peptide.