

## Product datasheet for **AP05150PU-N**

### **SURF1 Rabbit Polyclonal Antibody**

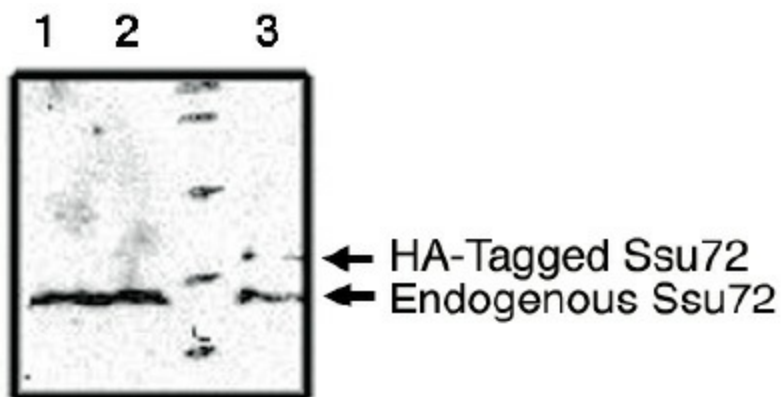
#### **Product data:**

<b>Product Type:</b>	Primary Antibodies
<b>Applications:</b>	WB
<b>Recommended Dilution:</b>	Western Blot: 1 - 5 µg/ml.
<b>Reactivity:</b>	Human
<b>Host:</b>	Rabbit
<b>Isotype:</b>	IgG
<b>Clonality:</b>	Polyclonal
<b>Immunogen:</b>	Full length recombinant human Ssu72 protein
<b>Specificity:</b>	This antibody reacts to SURF1.
<b>Formulation:</b>	Phosphate buffered saline with 0.08% sodium azide State: Purified State: Liquid purified IgG
<b>Concentration:</b>	lot specific
<b>Conjugation:</b>	Unconjugated
<b>Storage:</b>	The antibody can be shipped at ambient temperature. Store (in aliquots) at -20°C only. Avoid repeated freezing and thawing.
<b>Stability:</b>	Shelf life: one year from despatch.
<b>Background:</b>	Human Ssu72 is a highly conserved homologue of yeast Ssu72, a CTD phosphatase and a component of the polyadenylation/ termination machinery. The human Ssu72 is located on Chromosome 1p36 and seems to represent a single gene. It was identified as a pRb binding factor and was also shown to interact with TFIIIB and yeast PTA1. Rabbit polyclonal antibodies were raised against SSU72 fusion protein. The ABs recognize a single band of ~30 Kda on immunoblots of various human cell lines but do not work well on mouse tissues.
<b>Synonyms:</b>	Ssu72



[View online »](#)

## Product images:



Western blot analysis using Ssu72 antibody on MCF-7 (1), Cos-7 (2) and Cos-7 cells transfected with HA-Tagged Ssu72 protein (3).