

Product datasheet for **AP05147PU-N**

PP5 (PPP5C) Rabbit Polyclonal Antibody

Product data:

Product Type:	Primary Antibodies
Applications:	WB
Recommended Dilution:	Western Blot: 5 - 10 µg/ml.
Reactivity:	Human
Host:	Rabbit
Isotype:	IgG
Clonality:	Polyclonal
Immunogen:	Synthetic peptide derived from the human protein phosphatase 5 protein.
Specificity:	This antibody reacts to PPP5C.
Formulation:	Phosphate buffered saline with 0.08% sodium azide State: Purified State: Liquid purified Ig
Concentration:	lot specific
Conjugation:	Unconjugated
Storage:	The antibody can be shipped at ambient temperature. Store (in aliquots) at -20°C only. Avoid repeated freezing and thawing.
Stability:	Shelf life: one year from despatch.
Gene Name:	protein phosphatase 5 catalytic subunit
Database Link:	Entrez Gene 5536 Human P53041



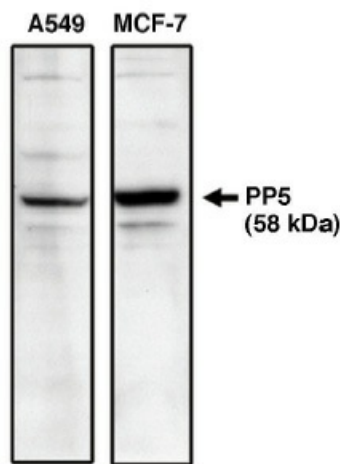
[View online »](#)

Background:

Protein phosphatase 5 (PP5) is a novel human protein serine/threonine phosphatase of molecular weight of 58 kDa. It is made up of a C-terminal phosphatase catalytic domain and an N-terminal domain, which has four repeats of 34 amino acids, three of which are tandemly arranged. The phosphatase domain contains all of the invariant motifs of the PP1/PP2A/PP2B gene family. However, it is not closely related to any other known member of this family of phosphatases. Thus it makes up a new subfamily of phosphatases. PP5 expressed in bacteria has been shown to dephosphorylate serine residues in proteins and is more sensitive than PP1 to the tumor promoter okadaic acid. PP5 appears to be localized to the nucleus suggesting that, like other nuclear tetratricopeptide (TPR)-containing proteins, it may play a role in the regulation of RNA biogenesis and mitosis.

Synonyms:

Protein phosphatase T, PPT, PP-t, PPP5, PP5

Product images:

Western blot analysis using PP5 specific antibody on A549 and MCF-7 cell lysates.