

Product datasheet for **AP05140PU-N**

CACNB4 Rabbit Polyclonal Antibody

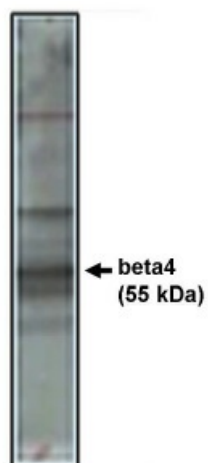
Product data:

Product Type:	Primary Antibodies
Applications:	WB
Recommended Dilution:	Western Blot: 5 - 10 µg/ml.
Reactivity:	Human, Mouse, Rat
Host:	Rabbit
Isotype:	IgG
Clonality:	Polyclonal
Immunogen:	Synthetic peptide derived from the rat calcium channel beta4 subunit conjugated to KLH.
Specificity:	This antibody reacts to CACNB4.
Formulation:	Phosphate buffered saline with 0.08% sodium azide State: Purified State: Liquid purified Ig
Concentration:	lot specific
Conjugation:	Unconjugated
Storage:	The antibody can be shipped at ambient temperature. Store (in aliquots) at -20°C only. Avoid repeated freezing and thawing.
Stability:	Shelf life: one year from despatch.
Gene Name:	calcium voltage-gated channel auxiliary subunit beta 4
Database Link:	Entrez Gene 785 Human O00305
Background:	Heterologous expression studies have shown that the activity of voltage-gated Ca ²⁺ channels is regulated by their beta subunits in a beta subunit isoform-specific manner. Our data show that all four beta subunit isoforms associate with L-type Ca ²⁺ channels in mammalian brain. This beta subunit heterogeneity may play an important role for the fine tuning of L-type channel function and modulation in neurons.
Synonyms:	CAB4, CACNLB4



[View online »](#)

Product images:



Western blot analysis using beta4 antibody on rat brain lysate.