

Product datasheet for **AP05138PU-N**

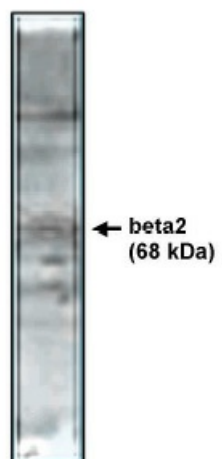
CACNB2 Rabbit Polyclonal Antibody

Product data:

Product Type:	Primary Antibodies
Applications:	WB
Recommended Dilution:	Western Blot: 5-10 µg/ml. Positive Control/Tissue: Rat brain lysate.
Reactivity:	Human, Mouse, Rat
Host:	Rabbit
Isotype:	IgG
Clonality:	Polyclonal
Immunogen:	Synthetic peptide derived from the rat beta2 calcium channel conjugated to KLH.
Specificity:	This antibody reacts to CACNB2.
Formulation:	Phosphate buffered saline with 0.08% Sodium Azide as preservative. State: Purified State: Liquid purified Ig fraction.
Concentration:	lot specific
Conjugation:	Unconjugated
Storage:	The antibody can be shipped at ambient temperature. Store (in aliquots) at -20°C only. Avoid repeated freezing and thawing.
Stability:	Shelf life: one year from despatch.
Gene Name:	calcium voltage-gated channel auxiliary subunit beta 2
Database Link:	Entrez Gene 783 Human Q08289
Background:	Heterologous expression studies have shown that the activity of voltage-gated Ca ²⁺ channels is regulated by their beta subunits in a beta subunit isoform-specific manner. Our data show that all four beta subunit isoforms associate with L-type Ca ²⁺ channels in mammalian brain. This beta subunit heterogeneity may play an important role for the fine tuning of L-type channel function and modulation in neurons.
Synonyms:	CAB2, CACNLB2, MYSB



[View online »](#)

Product images:

Western blot analysis using beta2 antibody on rat brain lysate.