

## Product datasheet for **AP05136PU-N**

### CACNA2D1 Rabbit Polyclonal Antibody

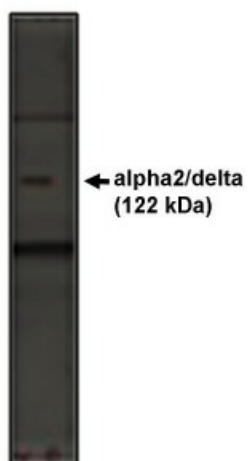
#### Product data:

Product Type:	Primary Antibodies
Applications:	WB
Recommended Dilution:	Western Blot: 5 - 10 µg/ml.
Reactivity:	Human, Mouse, Rat
Host:	Rabbit
Isotype:	IgG
Clonality:	Polyclonal
Immunogen:	Synthetic peptide derived from the rat alpha2/delta calcium channel conjugated to KLH.
Specificity:	This antibody reacts to CACNA2D.
Formulation:	Phosphate buffered saline with 0.08% sodium azide State: Purified State: Liquid purified Ig
Concentration:	lot specific
Conjugation:	Unconjugated
Storage:	The antibody can be shipped at ambient temperature. Store (in aliquots) at -20°C only. Avoid repeated freezing and thawing.
Stability:	Shelf life: one year from despatch.
Database Link:	<a href="#">P54290</a>
Background:	The calcium channel alpha2/delta subunit is a glycosylated structural subunit consisting of the alpha2 subunit and the delta peptide. There is distinctive alpha2 subunit expression in rat spinal cord and dorsal root ganglia (DRG) There are two forms of the alpha2 subunit in DRG that are different from the alpha2 subunit in other tissues examined, at least at the glycosylation level. Thus, post-translational modification may be important in tissue specific and functional expression of the alpha2/delta subunit (2). alpha2/delta and beta1b interact with alpha1G to increase trafficking of, or stabilize, functional alpha1G channels expressed at the plasma membrane.(3)
Synonyms:	CACNL2A, CCHL2A, MHS3



[View online »](#)

## Product images:



Western blot analysis using anti-CACNA2D antibody at 1.0 g/ml on K562 cell lysate.