

Product datasheet for **AP05121PU-N**

SH2D1A Rabbit Polyclonal Antibody

Product data:

Product Type:	Primary Antibodies
Applications:	IP, WB
Recommended Dilution:	Western Blot: 5 - 10 µg/ml. Immunoprecipitation.
Reactivity:	Human
Host:	Rabbit
Isotype:	IgG
Clonality:	Polyclonal
Immunogen:	Full-length recombinant SAP protein
Specificity:	This antibody reacts to SH2D1A.
Formulation:	Phosphate buffered saline with 0.08% sodium azide State: Purified State: Liquid purified Ig
Concentration:	lot specific
Conjugation:	Unconjugated
Storage:	The antibody can be shipped at ambient temperature. Store (in aliquots) at -20°C only. Avoid repeated freezing and thawing.
Stability:	Shelf life: one year from despatch.
Gene Name:	SH2 domain containing 1A
Database Link:	Entrez Gene 4068 Human O60880



[View online »](#)

Background:

SLAM (Signaling Lymphocyte-Activation Molecule) is a glycosylated type-I transmembrane protein which is present on the surface of B and T cells. SLAM is a high-affinity self-ligand which, when triggered, co-activated B or T lymphocyte responses and is considered to be important in bi-directional T - B cell stimulation. SAP (SLAM-Associated Protein) has been determined to be a 15 kDa protein. SAP is believed to be the genetic defect which causes X-linked Lymphoproliferative Syndrome (XLP). SAP is thought to bind to SLAM by the SH2 domain of the SAP protein. Binding of SAP to the SLAM protein blocks the binding of SHP-2 to the phosphorylated SLAM protein which causes XLP.

Synonyms:

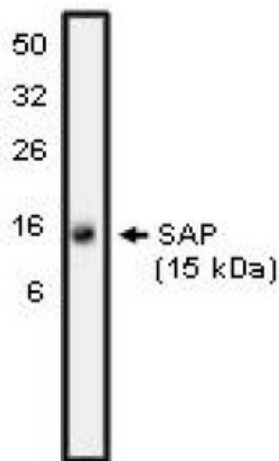
DSHP, SAP, SH2 domain-containing protein 1A, SLAM-associated protein, T-cell signal transduction molecule SAP, Duncan disease SH2-protein

Protein Families:

Druggable Genome

Protein Pathways:

Natural killer cell mediated cytotoxicity

Product images:

Western blot analysis using SAP antibody on NK-92 cell lysate at 10 ug/ml).