

## Product datasheet for **AP05113PU-N**

### EDG6 (S1PR4) Rabbit Polyclonal Antibody

#### Product data:

Product Type:	Primary Antibodies
Applications:	WB
Recommended Dilution:	<b>Western Blot:</b> Detects EDG-6 receptors at concentration of 5-10 µg/ml by Western blot using a Human EDG-6 receptor transfected cell line. Detects an approximately 45 kDa band in Cos cells transfected with full length Human EDG-6. Due to low expression of EDG receptors, we recommend use of Pierce Femto Signal substrate for western blot development. <b>Positive Control:</b> RH7777 cells transfected with EDG6 protein.
Reactivity:	Human
Host:	Rabbit
Clonality:	Polyclonal
Immunogen:	Synthetic peptide derived from the C-terminal of the EDG-6 receptor.
Specificity:	This antibody recognizes Human EDG-6 / S1P4 / S1PR4. Other species not tested.
Formulation:	PBS State: Purified State: Liquid purified Ig fraction Preservative: 0.08% Sodium Azide
Concentration:	lot specific
Purification:	Ammonium Sulfate Precipitation
Conjugation:	Unconjugated
Storage:	Upon receipt, store undiluted (in aliquots) at -20°C. Avoid repeated freezing and thawing.
Stability:	Shelf life: one year from despatch.
Gene Name:	sphingosine-1-phosphate receptor 4
Database Link:	<a href="#">Entrez Gene 8698 Human O95977</a>



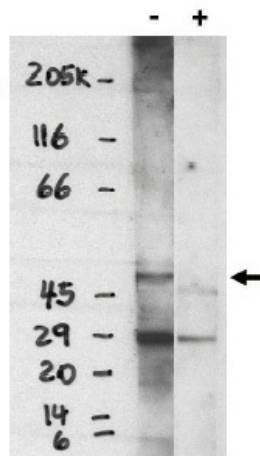
[View online »](#)

**Background:**

EDG-6 belongs to a family of G-protein coupled receptors whose ligands are lysophospholipids. The ligand for EDG-6 is sphingosine-1-phosphate. There are 8 known members of the EDG receptor family and they are implicated in mediating growth related effects such as induction of cellular proliferation, alterations in differentiation and survival and suppression of apoptosis. They also evoke cellular effector functions that are dependent on cytoskeletal responses such as contraction, secretion, adhesion and chemotaxis. EDG receptors are developmentally regulated and differ in tissue distribution. They couple to multiple types of G proteins to signal through ras and MAP kinase, rho, phospholipase C and several protein tyrosine kinases. EDG-6 is expressed in lymphoid and hematopoietic tissue and in the lungs. Recently, the designation of the EDG receptors has been modified to include the ligand for the receptor. Thus, the new designation for the EDG-6 receptor is the sphingosine 1-phosphate receptor-4 (S1P-4).

**Synonyms:**

EDG-6

**Product images:**

Western blot analysis using EDG-6 antibody on EDG-6 control lysate at 5 ug/ml without (-) and with (+) specific blocking peptide.