

Product datasheet for **AP05112PU-N**

Vsx2 (N-term) Sheep Polyclonal Antibody

Product data:

Product Type:	Primary Antibodies
Applications:	IHC, WB
Recommended Dilution:	Western Blot: 0.5-1.0 mg/ml. Detects a 46 kDa band in Mouse and Rat retinal tissue lysates. Immunohistochemistry on Frozen Sections. Suitable for use against recombinant proteins conjugated to OVA, GST, His tags and other.
Reactivity:	Mouse, Rat
Host:	Sheep
Isotype:	IgG
Clonality:	Polyclonal
Immunogen:	A recombinant protein corresponding to amino acids 1 to 131 derived from the N-terminal of the Human Chx10 protein conjugated to GST.
Specificity:	This antibody recognizes chx 10 (N-Term).
Formulation:	PBS containing 0.08% Sodium Azide as preservative State: Purified State: Liquid purified IgG fraction
Concentration:	lot specific
Purification:	Ammonium Sulfate Precipitation
Conjugation:	Unconjugated
Storage:	Upon receipt, store undiluted (in aliquots) at -20°C. Avoid repeated freezing and thawing.
Stability:	Shelf life: one year from despatch.
Predicted Protein Size:	46 kDa
Gene Name:	Mus musculus visual system homeobox 2 (Vsx2), transcript variant 2
Database Link:	Entrez Gene 171360 Rat Entrez Gene 12677 Mouse Q61412



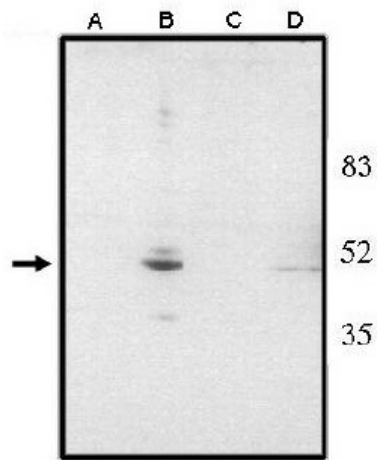
[View online »](#)

Background:

Chx10 is a 46kDa homeodomain protein of the paired-like class that is essential for development of the mammalian eye. Mutations in Chx10 cause microphthalmia, a cause of congenital blindness in humans, and the ocular retardation (or) phenotype in mice. In the developing mouse retina Chx10 is expressed in retinal progenitors, while in the mature retina, Chx10 expression becomes restricted to bipolar neurons. Concurrent with these expression patterns, the Chx10^{-/-} (or) retina is thin due to a defect in proliferation of retinal progenitors, and lacks bipolar neurons. Chx10 is also expressed in the developing brainstem, thalamus, and spinal cord.

Synonyms:

HOX10

Product images:

Western blot analysis using anti-Chx10 (NT) antibody at 1 ug/ml on rat liver (A), retina tissue lysate (B), mouse liver (C) and retina (D) tissue lysate.