

Product datasheet for **AP05094PU-N**

BNIP3L Rabbit Polyclonal Antibody

Product data:

Product Type:	Primary Antibodies
Applications:	WB
Recommended Dilution:	Western Blot: 0.5-1 µg/ml. Detects a 40 kDa band in K562 cell lysate which represents the monomer of Bnip3L.
Reactivity:	Human
Host:	Rabbit
Isotype:	IgG
Clonality:	Polyclonal
Immunogen:	Synthetic peptide corresponding to amino acids 77 to 92 of the Human Bnip3L protein. Immunogen sequence is identical in the mouse protein.
Specificity:	This antibody recognizes Bnip3L (IN) (nix).
Formulation:	PBS containing 0.02% Sodium Azide as a preservative State: Purified State: Liquid purified IgG fraction
Concentration:	lot specific
Purification:	Antigen Immunoaffinity Chromatography
Conjugation:	Unconjugated
Storage:	Upon receipt, store undiluted (in aliquots) at -20°C. Avoid repeated freezing and thawing.
Stability:	Shelf life: one year from despatch.
Gene Name:	BCL2/adenovirus E1B 19kDa interacting protein 3-like
Database Link:	Entrez Gene 665 Human O60238



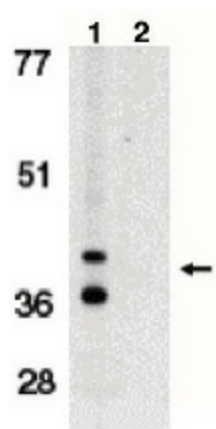
[View online »](#)

Background:

Members in the Bcl-2 family are critical regulators of apoptosis by either inhibiting or promoting cell death. Bcl-2 homology 3 (BH3) domain is a potent death domain. BH3 domain containing pro-apoptotic proteins, including Bad, Bax, Bid, Bik, Hrk, Nip3, and Bim, form a growing subclass of the Bcl-2 family. A novel BH3 domain containing protein was recently identified and designated Bnip3L, Bnip3a, and Nix (for Nip3-like protein X) (1-3). Bnip3L/Bnip3a/Nix is a homolog of the E1B 19K/Bcl-2 binding and pro-apoptotic protein Bnip3. Overexpression of Bnip3L induces apoptosis (2,3). Bnip3L interacts with and overcomes suppresses by Bcl-2 and Bcl-xL. Bnip3L is localized in mitochondria. The messenger RNA of Bnip3L is ubiquitously expressed in human tissues (1,2). Bnip3L and Bnip3 form a new subfamily of the pro-apoptotic mitochondrial proteins.

Synonyms:

BNIP3H, NIX

Product images:

Western blot analysis using anti-Bnip3L (IN) antibody at 1 ug/ml on K562 whole cell lysate in the absence (1) and presence (2) of immunogenic peptide.