

## Product datasheet for **AP05083PU-N**

### EDG1 (S1PR1) Rabbit Polyclonal Antibody

#### Product data:

Product Type:	Primary Antibodies
Applications:	WB
Recommended Dilution:	Western Blot: 5-10 µg/ml, Detects an approximately 44 kDa band in RH7777 cells transfected with full length human EDG-1. Due to low expression of EDG receptors, we recommend use of Pierce Femto Signal substrate for western blot development.
Reactivity:	Human, Mouse, Rat
Host:	Rabbit
Isotype:	IgG
Clonality:	Polyclonal
Immunogen:	Synthetic peptide derived from the C-terminal of the EDG-1 receptor
Specificity:	This antibody reacts to EDG1.
Formulation:	Phosphate buffered saline with 0.08% Sodium Azide as preservative. State: Purified State: Liquid (sterile filtered) purified Ig fraction.
Concentration:	lot specific
Conjugation:	Unconjugated
Storage:	The antibody can be shipped at ambient temperature. Store (in aliquots) at -20°C only. Avoid repeated freezing and thawing.
Stability:	Shelf life: one year from despatch.
Gene Name:	sphingosine-1-phosphate receptor 1
Database Link:	<a href="#">Entrez Gene 1901 Human P21453</a>



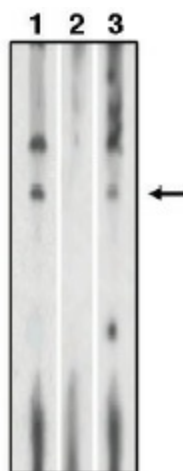
[View online »](#)

**Background:**

EDG-1 belongs to a family of G-protein coupled receptors whose ligands are lysophospholipids. The ligand for EDG-1 is sphingosine-1-phosphate. There are 8 known members of the EDG receptor family and they are implicated in mediating growth related effects such as induction of cellular proliferation, alterations in differentiation and survival and suppression of apoptosis. They also evoke cellular effector functions that are dependent on cytoskeletal responses such as contraction, secretion, adhesion and chemotaxis. EDG receptors are developmentally regulated and differ in tissue distribution. They couple to multiple types of G proteins to signal through ras and MAP kinase, rho, phospholipase C and several protein tyrosine kinases. EDG-1 is expressed in cardiovascular, leukocytecontaining and other tissues.

**Synonyms:**

S1P receptor 1, S1PR1, CHEDG1, EDG1, ECGF1, D1S3362, FLJ58121

**Product images:**

Western blot analysis of lysates of RH7777 cells transfected with full length human EDG-1 protein using anti-EDG-1 CT antibody at 10 ug/ml (1), antibody preincubated with specific blocking peptide (2) and antibody preincubated with non-specific control peptide (3) using Pierce Femto Signal substrate.