

Product datasheet for **AP05081PU-N**

Arhgef2 Sheep Polyclonal Antibody

Product data:

Product Type:	Primary Antibodies
Applications:	IF, IP, WB
Recommended Dilution:	Western Blot: 4 µg/ml. Detects a 118 kDa band in Mouse tissue extracts corresponding to wild-type LFC. Immunoprecipitation: 4 µg/ml. Immunofluorescence.
Reactivity:	Mouse
Host:	Sheep
Isotype:	IgG
Clonality:	Polyclonal
Immunogen:	Antibody developed using protein corresponding to amino acids 2 to 447 of the Lfc protein fused to GST.
Specificity:	This antibody recognizes LCF.
Formulation:	Phosphate Buffered Saline and 0.08% Sodium Azide State: Purified State: Liquid purified Ig fraction
Concentration:	lot specific
Conjugation:	Unconjugated
Storage:	The antibody can be shipped at ambient temperature. Store (in aliquots) at -20°C only. Avoid repeated freezing and thawing.
Stability:	Shelf life: one year from despatch.
Gene Name:	rho/rac guanine nucleotide exchange factor (GEF) 2
Database Link:	Entrez Gene 16800 Mouse Q60875



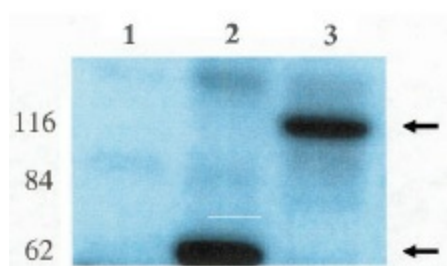
[View online »](#)

Background:

Lfc is a 118 kDa protein discovered in a screen for oncogenes in NIH 3T3 cells. Lfc is a signaling protein related to Lbc and is part of the Dbl family of proteins. Lfc is a guanine-nucleotide exchange factor (GEF) for the Rho family of small GTPases. Lfc has also been shown to be upstream of the serine-threonine kinase JNK. Lfc has also been shown to mediate the activation of the Rac signaling pathway.

Synonyms:

KIAA0651, LFP40, GEF-H1

Product images:

Western blot analysis using anti-Lfc antibody on HEK-293 cell transfected with vector alone (Lane 1), LFC-short (Lane 2) and LFC-long (Lane 3).