

Product datasheet for **AP05080PU-N**

MARK3 Sheep Polyclonal Antibody

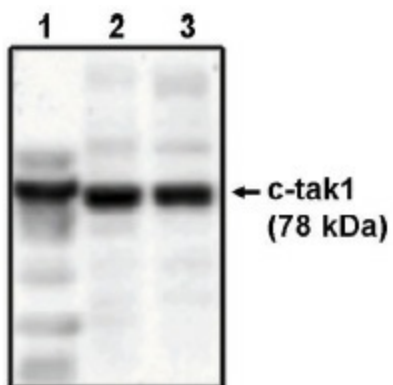
Product data:

Product Type:	Primary Antibodies
Applications:	IP, WB
Recommended Dilution:	Western Blot: 1 to 5 µg/ml. Detects c-tak1 in RKO and HCT116 cell lysates POSITIVE CONTROL: Recombinant His-tagged C-TAK1 protein.
Reactivity:	Human
Host:	Sheep
Isotype:	IgG
Clonality:	Polyclonal
Immunogen:	Recombinant, full-length His-tagged human C-TAK1 produced in E. Coli.
Specificity:	This antibody reacts to C-TAK1.
Formulation:	Phosphate buffered saline with 0.08% sodium azide State: Purified State: Liquid purified Ig (0.2 µm sterile filtered)
Concentration:	lot specific
Conjugation:	Unconjugated
Storage:	The antibody can be shipped at ambient temperature. Store (in aliquots) at -20°C only. Avoid repeated freezing and thawing.
Stability:	Shelf life: one year from despatch.
Gene Name:	microtubule affinity regulating kinase 3
Database Link:	Entrez Gene 4140 Human P27448
Background:	C-TAK1 (Cdc25C associated protein kinase) is a ubiquitously expressed protein kinase found in human tissues and cell lines and can phosphorylate Cdc25C on serine 216 in vitro. C-TAK1 is distinct from the DNA damage checkpoint kinase Chk1 and may regulate interactions between Cdc25C and 14-3-3 in vivo by phosphorylating Cdc25C at serine 216.
Synonyms:	CTAK1, C-TAK1, MAP/microtubule affinity-regulating kinase 3, Serine/threonine-protein kinase p78, PAR-1, STK10



[View online »](#)

Product images:



Western blot analysis using c-tak1 antibody on His-tagged c-tak1 (1), RKO cell lysate (2) and HCT116 cell lysate (3).