

Product datasheet for **AP05068PU-N**

FLI1 Sheep Polyclonal Antibody

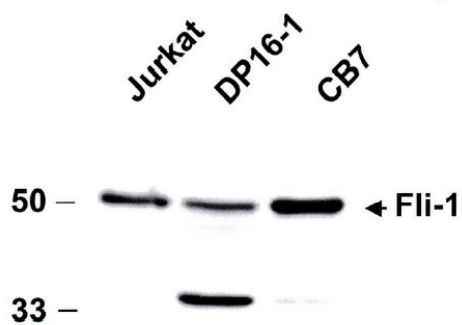
Product data:

Product Type:	Primary Antibodies
Applications:	WB
Recommended Dilution:	Western Blot: 1:500.
Reactivity:	Human, Mouse
Host:	Sheep
Isotype:	IgG
Clonality:	Polyclonal
Immunogen:	Protein corresponding to amino acid sequence 1-239 of the N terminus
Specificity:	This antibody reacts to FLI-1.
Formulation:	Phosphate buffered saline with 0.08% sodium azide State: Purified State: Liquid purified Ig (0.2µm sterile filtered)
Concentration:	lot specific
Conjugation:	Unconjugated
Storage:	Store the antibody at -20°C. Avoid repeated freezing and thawing.
Stability:	Shelf life: one year from despatch.
Gene Name:	Fli-1 proto-oncogene, ETS transcription factor
Database Link:	Entrez Gene 2313 Human Q01543
Background:	The immunogen for the anti-murine fli-1 was a GST fusion protein corresponding to amino acid sequence 1 - 239 of the N terminus and having a molecular weight of 52 kDa. Fli-1 is a member of the ets family of transcription factors and is a proto-oncogene involved in erythroleukemia and Ewings Sarcoma.
Synonyms:	Fli-1 proto-oncogene, ERGB transcription factor, vascular tumor marker



[View online »](#)

Product images:



Detection of Fli-1 by western blotting: Total protein (20 micrograms) extracted from murine erythroleukemia cell lines CB7 and DP16-1 and Jurkat human T-cell line were separated on a 10% acrylamide gel, blotted to nylon and Western blotted with anti-Fli-1 antibody (dilution 1:500). The location of 52kda Fli-1 protein is indicated by an arrow.