

Product datasheet for **AP05067PU-N**

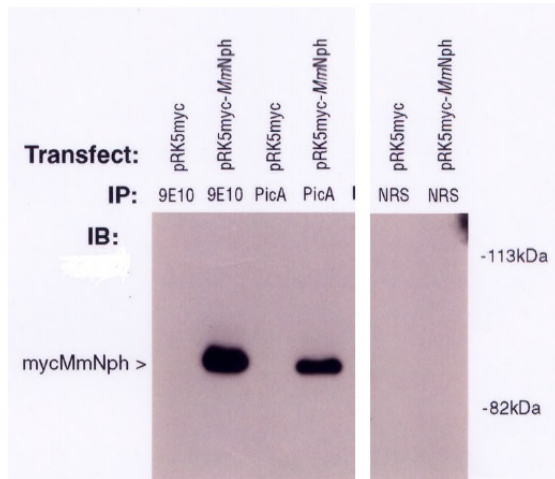
Nephronophthisis (NPHP1) Rabbit Polyclonal Antibody

Product data:

Product Type:	Primary Antibodies
Applications:	IHC, WB
Recommended Dilution:	Western Blot: 2 - 10 µg/ml. Immunoprecipitation: 10 - 20 µg/ml.
Reactivity:	Mouse
Host:	Rabbit
Isotype:	IgG
Clonality:	Polyclonal
Immunogen:	Recombinant protein corresponding to the amino acid 612-691 of the C
Specificity:	This antibody reacts to Nephronophthisis (NPH).
Formulation:	Phosphate buffered saline with 0.08% sodium azide State: Purified State: Liquid purified Ig (0.2µm sterile filtered)
Concentration:	lot specific
Conjugation:	Unconjugated
Storage:	Store the antibody at -20°C. Avoid repeated freezing and thawing.
Stability:	Shelf life: one year from despatch.
Gene Name:	nephrocystin 1
Database Link:	O15259
Background:	The immunogen used for the anti-mouse pic region was a GST fusion protein corresponding to the amino acid 612 - 691 of the C terminus region and having a molecular weight of 90 kD. Familial juvenile nephronophthisis (NPH) is an autosomal recessive cystic kidney disease that is the primary inherited cause of chronic renal failure in children.
Synonyms:	NPHP1, NPH1

[View online »](#)

Product images:



Kidney: Formalin-Fixed Paraffin-Embedded (FFPE)