

Product datasheet for **AP05065PU-N**

AKAP12 / SSeCKS Sheep Polyclonal Antibody

Product data:

Product Type:	Primary Antibodies
Applications:	IHC, IP, WB
Recommended Dilution:	Western Blot: 2-5 µg/ml. Immunoprecipitation. Immunohistochemistry.
Reactivity:	Bovine, Rat
Host:	Sheep
Isotype:	IgG
Clonality:	Polyclonal
Immunogen:	Recombinant protein corresponding to amino acids 620-1596 of the SSeCKS protein.
Specificity:	This antibody reacts to SSeCKS (Src-Suppressed C Kinase Substrate).
Formulation:	Phosphate buffered saline with 0.08% Sodium Azide as preservative. State: Purified State: Liquid purified Ig fraction.
Concentration:	lot specific
Purification:	Ammonium Sulfate Precipitation.
Conjugation:	Unconjugated
Storage:	The antibody can be shipped at ambient temperature. Store (in aliquots) at -20°C only. Avoid repeated freezing and thawing.
Stability:	Shelf life: one year from despatch.
Database Link:	Q62766



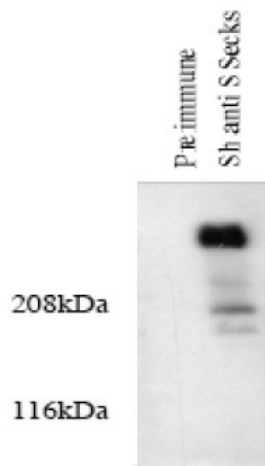
[View online »](#)

Background:

Activation of protein kinase C is a key signal transduction event in mesangial cell dedifferentiation and proliferation, yet little is known about downstream substrates or their roles in normal or diseased states. SSeCKS, a novel protein kinase C substrate originally isolated as a src-suppressed negative mitogenic regulator in fibroblasts, controls actinbased cytoskeletal architecture and scaffolds key signaling kinases such as protein kinase C and protein kinase A. Activation of protein kinase C is a key signal transduction event in mesangial cell dedifferentiation. A role for SSeCKS, a PKA/PKC scaffolding protein, has been implicated during the process of spermiogenesis and in the actinbased stellate morphology of mesangial cells.

Note:

Predicted Molecular Weight: 172.5 kDa

Product images:

Western blotting total cellular protein from cultured rat aortic smooth muscle cells was prepared and analyze. The protein was transferred to a PVDF membrane, blocked 1XTBS, 0.1% tween 20/5%NFD, probed with 5 g/ml of pre-immune serum 5 g of SSeCKS antibody