

Product datasheet for **AP05056PU-N**

PPP4C Rabbit Polyclonal Antibody

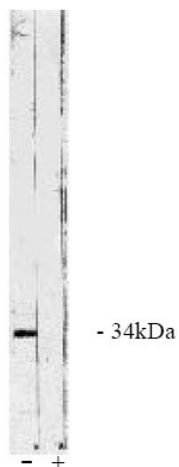
Product data:

Product Type:	Primary Antibodies
Applications:	IHC, WB
Recommended Dilution:	Immunoblotting: 1:500 to 1:1,000. Immunocytochemistry: 1:500 to 1: 1,000.
Reactivity:	Bovine, Human, Mouse, Rat
Host:	Rabbit
Isotype:	IgG
Clonality:	Polyclonal
Immunogen:	A PP X/C peptide conjugated to KLH
Specificity:	This antibody reacts to protein phosphatase 2 X/C.
Formulation:	Phosphate buffered saline with 0.08% sodium azide State: Purified State: Liquid purified Ig (0.2µm sterile filtered)
Concentration:	lot specific
Conjugation:	Unconjugated
Storage:	Store the antibody at -20°C. Avoid repeated freezing and thawing.
Stability:	Shelf life: one year from despatch
Gene Name:	protein phosphatase 4 catalytic subunit
Database Link:	Entrez Gene 56420 Mouse Entrez Gene 171366 Rat Entrez Gene 5531 Human P60510
Background:	The immunogen used to the purified PP X/C peptide conjugated to KLH corresponding to the sequence aa 294 - 307.
Synonyms:	PPP4, PP4C, PPX, PP-X, Protein phosphatase X
Protein Families:	Druggable Genome, Phosphatase



[View online »](#)

Product images:



PP X/C antibody western blot of total bovine testes homogenate. (+) indicates presence of specific blocking peptide of control peptide (-).