

## Product datasheet for **AP05054PU-N**

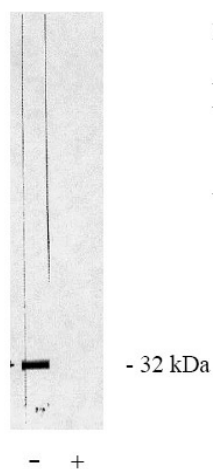
### PPP6C Rabbit Polyclonal Antibody

#### Product data:

Product Type:	Primary Antibodies
Applications:	IHC, WB
Recommended Dilution:	<b>Immunoblotting:</b> 1-10 µg/ml. <b>Immunoprecipitation:</b> 10-20 µg/ml.
Reactivity:	Bovine, Human, Mouse, Rat
Host:	Rabbit
Isotype:	IgG
Clonality:	Polyclonal
Immunogen:	KLH conjugated peptide corresponding to the C-terminal peptide of PPV catalytic subunit.
Specificity:	This antibody reacts to serine/threonine protein phosphatase 6/C (V/C).
Formulation:	Phosphate buffered saline with 0.08% Sodium Azide State: Purified State: Liquid purified Ig (0.2µm sterile filtered)
Concentration:	lot specific
Purification:	Ammonium Sulfate Precipitation
Conjugation:	Unconjugated
Storage:	Upon receipt, store undiluted (in aliquots) at -20°C. Avoid repeated freezing and thawing.
Stability:	Shelf life: one year from despatch.
Predicted Protein Size:	33 kDa
Gene Name:	protein phosphatase 6 catalytic subunit
Database Link:	<a href="#">Entrez Gene 67857 Mouse</a> <a href="#">Entrez Gene 171121 Rat</a> <a href="#">Entrez Gene 5537 Human</a> <a href="#">O00743</a>
Synonyms:	PPP6, PP6C
Protein Families:	Druggable Genome, Phosphatase



[View online »](#)

**Product images:**

PP V/C antibody western blot of total rat brain homogenate. (+) indicates blocking with specific peptide or (-) peptide control.