

## Product datasheet for **AP05047PU-N**

### PPP2R5C Rabbit Polyclonal Antibody

#### Product data:

Product Type:	Primary Antibodies
Applications:	WB
Recommended Dilution:	Western Blot: Detects a 56 kDa band. Positive Control: Whole rat brain homogenate.
Reactivity:	Bovine, Human, Mouse, Rat
Host:	Rabbit
Isotype:	IgG
Clonality:	Polyclonal
Immunogen:	Antibody raised against synthetic peptide corresponding to amino acids 53 to 66 of the mammalian protein phosphatase 2 A/B conjugated to KLH.
Specificity:	This antibody reacts to Protein phosphatase 2A (PP2A).
Formulation:	Phosphate buffered saline with 0.08% sodium azide State: Purified State: Liquid purified Ig (0.2 µm sterile filtered)
Concentration:	lot specific
Conjugation:	Unconjugated
Storage:	The antibody can be shipped at ambient temperature. Store (in aliquots) at -20°C only. Avoid repeated freezing and thawing.
Stability:	Shelf life: one year from despatch.
Gene Name:	Homo sapiens protein phosphatase 2 regulatory subunit B', gamma (PPP2R5C), transcript variant 1
Database Link:	<u><a href="#">Entrez Gene 26931 Mouse</a></u> <u><a href="#">Entrez Gene 691318 Rat</a></u> <u><a href="#">Entrez Gene 5527 Human</a></u> <u><a href="#">Q13362</a></u>


[View online »](#)

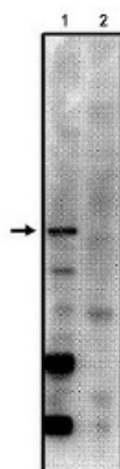
**Background:** Protein phosphatase 2A (PP2A) is a heterotrimeric enzyme consisting of a catalytic subunits (C), a structural subunit (A) and a variable regulatory subunit (B). The B subunit family is made up of the a, b and g isoforms. The PP2A/Bg isoform appears to only be detectable in the brain where it has been speculated that it cytoskeletal substrates. The RNA which produces the PP2A/Bg is developmentally regulated and increases sharply after birth. It has also been suggested that it may be important in the establishment and maintenance of neuronal connections.

**Synonyms:** Protein phosphatase 2A, PP2A B subunit B' gamma isoform, PP2A B subunit B56 gamma isoform, PP2A B subunit PR61 gamma isoform, PP2A B subunit R5 gamma isoform, KIAA0044, NY-REN-29

**Protein Families:** Druggable Genome, Phosphatase

**Protein Pathways:** Oocyte meiosis, Wnt signaling pathway

### Product images:



Western blot analysis using anti-PP2A/Bg2 antibody on total rat brain homogenate with control peptide (1) and blocking peptide (2).