

Product datasheet for **AP05046PU-N**

Protein Phosphatase 2 A/B (B' pan 2) Sheep Polyclonal Antibody

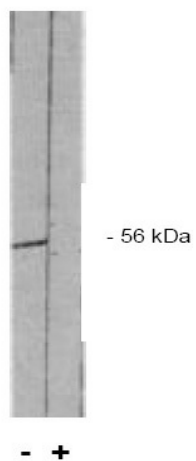
Product data:

Product Type:	Primary Antibodies
Applications:	WB
Recommended Dilution:	Immunoblotting: 1:500 to 1:1,000.
Reactivity:	Bovine, Human, Mouse, Rat
Host:	Sheep
Isotype:	IgG
Clonality:	Polyclonal
Specificity:	This antibody reacts to serine/threonine protein phosphatase 2 A/B' pan 2.
Formulation:	Phosphate buffered saline with 0.08% sodium azide State: Purified State: Liquid purified Ig (0.2µm sterile filtered)
Concentration:	lot specific
Conjugation:	Unconjugated
Storage:	Store the antibody at -20°C. Avoid repeated freezing and thawing.
Stability:	Shelf life: one year from despatch.
Background:	The immunogen used to the purified peptide conjugated to KLH corresponding to the sequence NH ₂ -Val-Ser-Ser-Pro-His-Phe-Gln-Val-Ala-Glu-Arg-Ala-Leu-Tyr-COOH. This antibody is specific to pp2A/B isoforms.
Synonyms:	ppB'pan2



[View online »](#)

Product images:



PP 2 A/B pan 2 antibody western blot of total rat brain extract. (+) indicates blocking specific peptide or (-) or control peptide added.