

## Product datasheet for **AP05045PU-N**

### Protein Phosphatase 2 A/B (B' pan 2) Rabbit Polyclonal Antibody

#### Product data:

Product Type:	Primary Antibodies
Applications:	WB
Recommended Dilution:	Suitable for Immunoblotting (1/500-1/1,000).
Reactivity:	Bovine, Human, Mouse, Rat
Host:	Rabbit
Isotype:	IgG
Clonality:	Polyclonal
Immunogen:	Purified peptide conjugated to KLH corresponding to the sequence NH <sub>2</sub> -Val-Ser-Ser-Pro-His-Phe-Gln-Val-Ala-GluArg-Ala-Leu-Tyr-COOH.
Specificity:	This antibody is specific to pp2A/B isoforms.
Formulation:	Phosphate buffered saline PBS containing 0.08% sodium azide as preservative. State: Purified State: Liquid (sterile filtered) purified IgG fraction.
Concentration:	lot specific
Conjugation:	Unconjugated
Storage:	Store the antibody (undiluted) at 2-8°C for one month or (in aliquots) at -20°C for longer. Aliquot to avoid freeze/thaw cycles.
Stability:	Shelf life: One year from despatch.
Synonyms:	ppB'pan2



[View online »](#)

## Product images:

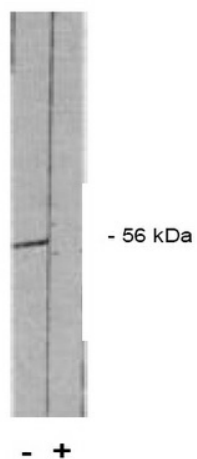


Figure 1. PP2 A/B pan 2 antibody Western blot of total rat brain extract. (+) indicates blocking specific peptide or (-) or control peptide added.