

Product datasheet for **AP05043PU-N**

PPP2R2B Rabbit Polyclonal Antibody

Product data:

Product Type:	Primary Antibodies
Applications:	WB
Recommended Dilution:	Immunoblotting: 1/500-1/1,000.
Reactivity:	Bovine, Human, Mouse, Rat
Host:	Rabbit
Isotype:	IgG
Clonality:	Polyclonal
Immunogen:	Purified peptide conjugated to KLH corresponding to the sequence NH ₂ -Cys-Gly-Glu-Glu-Asp-Ile-Asp-THr-Arg-Lys-Ile-Asn-Asn-Ser-Phe-COOH. This peptide antibody corresponds to N-terminal peptide of PP2A/Bb regulatory subunit having a MW of 53kDa. The sequence used is amino acid 2-14.
Specificity:	This antibody reacts to serine/threonine protein phosphatase 2A/B beta. Minimal cross reactivity against 2A/Bg .
Formulation:	PBS with 0.08% Sodium Azide as preservative. State: Purified State: Liquid purified Ig (0.2µm sterile filtered)
Concentration:	lot specific
Conjugation:	Unconjugated
Storage:	Store the antibody at -20°C. Avoid repeated freezing and thawing.
Stability:	Shelf life: one year from despatch.
Gene Name:	protein phosphatase 2 regulatory subunit Bbeta
Database Link:	Entrez Gene 60660 Rat Entrez Gene 72930 Mouse Entrez Gene 5521 Human Q00005



[View online »](#)

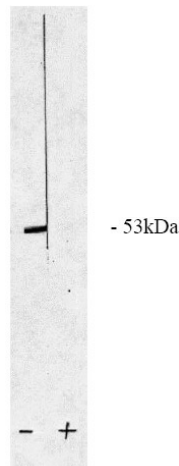
Background: PPP2R2B belongs to the phosphatase 2 regulatory subunit B family. Protein phosphatase 2 is one of the four major Ser/Thr phosphatases, and it is implicated in the negative control of cell growth and division. It consists of a common heteromeric core enzyme, which is composed of a catalytic subunit and a constant regulatory subunit, that associates with a variety of regulatory subunits. The B regulatory subunit might modulate substrate selectivity and catalytic activity. This protein is a beta isoform of the regulatory subunit B55 subfamily.

Synonyms: PP2A subunit B B-beta isoform, B55-beta isoform, PR55-beta isoform, R2-beta isoform, protein phosphatase 2A 55 kDa regulatory subunit B beta

Protein Families: Druggable Genome, Phosphatase

Protein Pathways: Tight junction

Product images:



PP2 A/B western blot of total rat brain extract. (+) or (-) indicates present of blocking peptide or control peptide.