

Product datasheet for **AP05041PU-N**

PPP2R1B Rabbit Polyclonal Antibody

Product data:

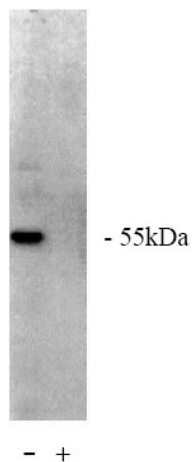
Product Type:	Primary Antibodies
Applications:	IHC, WB
Recommended Dilution:	Immunoblotting: 5 - 10 µg/ml. Immunocytochemistry: 5 - 10 µg/ml.
Reactivity:	Bovine, Human, Mouse, Rat
Host:	Rabbit
Isotype:	IgG
Clonality:	Polyclonal
Immunogen:	A peptide conjugated to KLH
Specificity:	This antibody reacts to serine/threonine protein phosphatase 2A/B alpha.
Formulation:	Phosphate buffered saline with 0.08% sodium azide State: Purified State: Liquid purified Ig (0.2µm sterile filtered)
Concentration:	lot specific
Conjugation:	Unconjugated
Storage:	Store the antibody at -20°C. Avoid repeated freezing and thawing.
Stability:	Shelf life: one year from despatch.
Gene Name:	protein phosphatase 2 scaffold subunit Abeta
Database Link:	Entrez Gene 73699 Mouse Entrez Gene 315648 Rat Entrez Gene 5519 Human P30154
Background:	The immunogen used to the purified peptide conjugated to KLH corresponding to the sequence NH ₂ -Phe-Ser-Gln-Val-Lys-Gly-Ala-Val-Asp-Asp-Asp-Val-Ala-Glu-COOH. This peptide antibody corresponds to N-terminal peptide of PP2A/B _ regulatory subunit having a MW of 55kD. The sequence used is amino acid 14 - 27.
Synonyms:	PP2A subunit A PR65-beta isoform, PP2A subunit A R1-beta isoform, protein phosphatase 2A 65 kDa regulatory subunit A beta, protein phosphatase 2A 65 kDa regulatory subunit A beta
Protein Families:	Druggable Genome, Phosphatase, Transcription Factors



[View online »](#)

Protein Pathways: Long-term depression, Oocyte meiosis, TGF-beta signaling pathway, Tight junction, Wnt signaling pathway

Product images:



PP 2 A/B alpha western blot of total rat brain homogenate. (+) indicates presence of specific blocking peptide of control peptide (-).