

Product datasheet for **AP05038PU-N**

PP1C gamma (PPP1CC) (Isoform gamma-2) Sheep Polyclonal Antibody

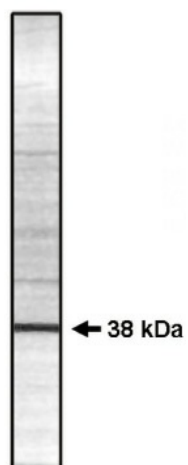
Product data:

Product Type:	Primary Antibodies
Applications:	WB
Recommended Dilution:	Immunoblotting: 5-10 µg/ml. Immunoprecipitation.
Reactivity:	Bovine, Human, Mouse, Rat
Host:	Sheep
Isotype:	IgG
Clonality:	Polyclonal
Immunogen:	Purified peptide conjugated to KLH corresponding to the sequence NH ₂ -Gln-Lys-Ala-Ser-Asn-Tyr-Arg-Asn-Asn-Thr-Val-Lys-Tyr-Glu-COOH.
Specificity:	This antibody recognizes Serine/Threonine protein Phosphatase 1gamma2. No cross reactivity with other recombinant pp1 isoforms.
Formulation:	Phosphate buffered saline with 0.08% Sodium Azide as preservative State: Purified State: Liquid purified Ig (0.2µm sterile filtered) fraction
Concentration:	lot specific
Conjugation:	Unconjugated
Storage:	Store the antibody at -20°C. Avoid repeated freezing and thawing.
Stability:	Shelf life: one year from despatch.
Gene Name:	protein phosphatase 1 catalytic subunit gamma
Database Link:	Entrez Gene 19047 Mouse Entrez Gene 24669 Rat Entrez Gene 5501 Human P36873
Synonyms:	PP-1G, PPP1G, PP1gamma
Protein Families:	Druggable Genome, Phosphatase
Protein Pathways:	Focal adhesion, Insulin signaling pathway, Long-term potentiation, Oocyte meiosis, Regulation of actin cytoskeleton, Vascular smooth muscle contraction



[View online »](#)

Product images:



Western blot analysis using Protein Phosphatase 1 gamma 2 antibody on total rat testes extracts.