

## Product datasheet for **AP05036PU-N**

### PP1C gamma (PPP1CC) Rabbit Polyclonal Antibody

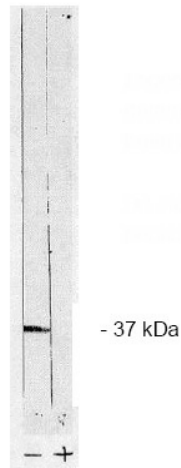
#### Product data:

Product Type:	Primary Antibodies
Applications:	IP, WB
Recommended Dilution:	<b>Immunoblotting:</b> 5-10 µg/ml. <b>Immunoprecipitation.</b>
Reactivity:	Bovine, Human, Mouse, Rat
Host:	Rabbit
Isotype:	IgG
Clonality:	Polyclonal
Immunogen:	A KLH conjugated peptide corresponding to the C-terminal region (311-323) of PP1 gamma 1 catalytic subunit.
Specificity:	This antibody recognizes Serine/Threonine Protein Phosphatase 1 gamma 1. No cross reactivity with other recombinant pp1 isoforms.
Formulation:	PBS State: Purified State: Liquid purified Ig (0.2µm sterile filtered) Preservative: 0.08% Sodium Azide
Concentration:	lot specific
Purification:	Ammonium Sulfate Precipitation
Conjugation:	Unconjugated
Storage:	Upon receipt, store undiluted (in aliquots) at -20°C. Avoid repeated freezing and thawing.
Stability:	Shelf life: one year from despatch.
Predicted Protein Size:	37 kDa
Gene Name:	protein phosphatase 1 catalytic subunit gamma
Database Link:	<a href="#">Entrez Gene 19047 Mouse</a> <a href="#">Entrez Gene 24669 Rat</a> <a href="#">Entrez Gene 5501 Human</a> <a href="#">P36873</a>



[View online »](#)

<b>Background:</b>	The immunogen used to the purified peptide conjugated to KLH corresponding to the sequence NH <sub>2</sub> -Thr-Pro-Pro-Arg-Gly-Met-Ile-Thr-Lys-Gln-Ala-Lys-Lys-COOH. This peptide antibody corresponds to C-terminal peptide of PP1 gamma 1 catalytic subunit having a MW of 37kDa. The sequence used is amino acid 311 - 323.
<b>Synonyms:</b>	PP-1G, PPP1G, PP1gamma
<b>Protein Families:</b>	Druggable Genome, Phosphatase
<b>Protein Pathways:</b>	Focal adhesion, Insulin signaling pathway, Long-term potentiation, Oocyte meiosis, Regulation of actin cytoskeleton, Vascular smooth muscle contraction

**Product images:**

PP 1 gamma 1 antibody staining total rat brain homogenate. (+) indicates presence of blocking peptide or (-) control peptide.