

## Product datasheet for **AP05034PU-N**

### Protein Phosphatase 1 beta (PPP1CB) Rabbit Polyclonal Antibody

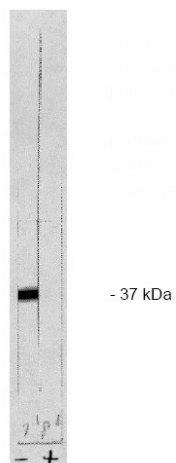
#### Product data:

Product Type:	Primary Antibodies
Applications:	IP, WB
Recommended Dilution:	Immunoblotting: 5 - 10 µg/ml. Immunoprecipitation: 10 - 15 µg/ml.
Reactivity:	Bovine, Human, Mouse, Rat
Host:	Rabbit
Isotype:	IgG
Clonality:	Polyclonal
Immunogen:	A peptide conjugated to KLH
Specificity:	This antibody reacts to serine/threonine protein phosphatase 1 beta. No cross reactivity with other recombinant pp1 isoforms.
Formulation:	Phosphate buffered saline with 0.08% sodium azide State: Purified State: Liquid purified Ig (0.2µm sterile filtered)
Concentration:	lot specific
Purification:	Purified
Conjugation:	Unconjugated
Storage:	Store the antibody undiluted at 2-8°C for one month or (in aliquots) at -20°C for longer. Avoid repeated freezing and thawing.
Stability:	Shelf life: one year from despatch.
Gene Name:	protein phosphatase 1 catalytic subunit beta
Database Link:	<a href="#">Entrez Gene 5500 Human P62140</a>
Background:	The immunogen used to the purified peptide conjugated to KLH corresponding to the sequence NH <sub>2</sub> -Pro-Arg-Thr-Ala-Asn-Pro-Pro-Lys-Lys-Arg-COOH. This peptide antibody corresponds to C-terminal peptide of PP1 beta catalytic subunit having a MW of 38kDa. The sequence used is amino acid 318 - 327.
Synonyms:	PP-1B, PP1beta, Protein phosphatase 1-beta, PPP1CD, Protein phosphatase 1-delta



[View online »](#)

## Product images:



PP 1 beta antibody western blot of total rat brain homogenate. (+) indicates the presence of specific blocking peptide or (-) the presence of control peptide.