

Product datasheet for **AP05020PU-N**

MAGI3 (GKWW domain) Sheep Polyclonal Antibody

Product data:

Product Type:	Primary Antibodies
Applications:	WB
Recommended Dilution:	Western Blot: 1 - 10 µg/ml. Detects a 130 kDa band in cells transfected with full-length MAGI-3 protein.
Reactivity:	Human
Host:	Sheep
Isotype:	IgG
Clonality:	Polyclonal
Immunogen:	Recombinant protein corresponding to the guanylate kinase-WW domain of MAGI-3.
Specificity:	This antibody reacts to MAGI-3, GKWW.
Formulation:	Phosphate buffered saline with 0.08% sodium azide State: Purified State: Liquid purified Ig (0.2 µm sterile filtered)
Concentration:	lot specific
Conjugation:	Unconjugated
Storage:	The antibody can be shipped at ambient temperature. Store (in aliquots) at -20°C only. Avoid repeated freezing and thawing.
Stability:	Shelf life: one year from despatch.
Gene Name:	membrane associated guanylate kinase, WW and PDZ domain containing 3
Database Link:	Entrez Gene 260425 Human Q5TCQ9



[View online »](#)

Background:

Membrane-associated guanylate kinase with inverted orientation (MAGI3) is a novel, 130 kDa guanylate kinase which is part of a family of multi-PDZ domain containing guanylate kinases. These guanylate kinases are localized to epithelial cell tight junctions. MAGI3 and PTEN/MMAC cooperate to modulate the kinase activity of AKT/protein kinase B (PKB). MAGI3 positions the PTEN/MMAC phosphatase to specific subcellular locations that are involved with the regulation of cell proliferation and survival. MAGI3, as well as other proteins in this family, are made up of an N-terminal guanylate kinase domain, followed by a WW domain, named for two conserved tryptophan residues and first identified as two repeats in mouse YAP65, which is then followed by 5 PDZ domains.

Synonyms:

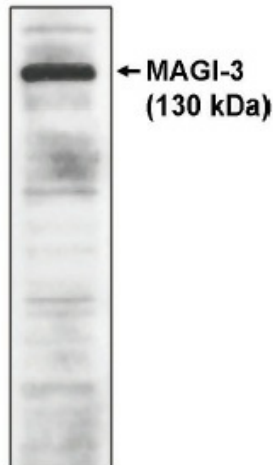
MAGI-3

Protein Families:

Druggable Genome

Protein Pathways:

Tight junction

Product images:

Western blot analysis using MAGI-3, GKWW antibody on cell lysates transfected with full-length human MAGI-3 protein.