

## Product datasheet for **AP05017PU-N**

### Chk1 (CHEK1) Sheep Polyclonal Antibody

#### Product data:

Product Type:	Primary Antibodies
Applications:	IP, WB
Recommended Dilution:	<b>Western Blot:</b> 1-10 µg/ml. <b>Immunoprecipitation.</b>
Reactivity:	Human, Monkey, Mouse, Rat
Host:	Sheep
Isotype:	IgG
Clonality:	Polyclonal
Immunogen:	A GST fusion protein corresponding to amino acid sequence 1-474 with having a molecular weight of 54 kD.
Specificity:	This antibody recognizes CHK1 kinase.
Formulation:	Phosphate buffered saline with 0.08% Sodium Azide as preservative. State: Purified State: Liquid (0.2µm sterile filtered) purified IgG fraction.
Concentration:	lot specific
Conjugation:	Unconjugated
Storage:	Store the antibody at -20°C. Avoid repeated freezing and thawing.
Stability:	Shelf life: one year from despatch.
Gene Name:	checkpoint kinase 1
Database Link:	<a href="#">Entrez Gene 1111 Human O14757</a>



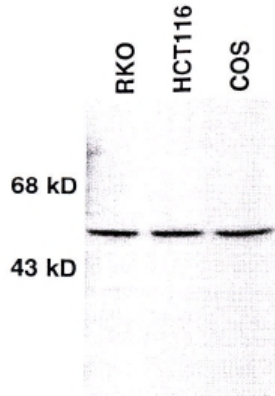
[View online »](#)

**Background:**

One mechanism by which checkpoints maintain the fidelity of cell cycle events is through blocking mitosis in response to unreplicated or damaged DNA. In most species this occurs through inhibiting activation of the cyclic-dependent kinase *cdc2*, which regulates entry in to mitosis. Chk1, a kinase involved in the DNA damage checkpoint response can phosphorylate Cdc25C an activator of *cdc2*. It is hypothesized that *chk 1* induces serine 216 phosphorylation of Cdc 25C and subsequent binding negatively regulated Cdc25C, thus preventing it from activating *cdc2*.

**Synonyms:**

CHEK1, CHEK-1

**Product images:**

CHK1 antibody staining of cell lines at 1/500 dilution.