

Product datasheet for **AP03043PU-N**

GRB2 (198-217) Rabbit Polyclonal Antibody

Product data:

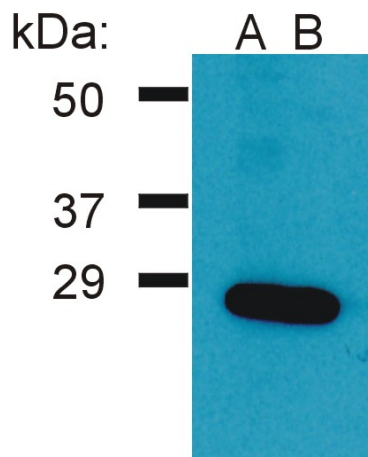
Product Type:	Primary Antibodies
Applications:	WB
Recommended Dilution:	Western Blot: 1-2 µg/ml, reducing conditions.
Reactivity:	Bovine, Human, Mouse, Rat
Host:	Rabbit
Isotype:	IgG
Clonality:	Polyclonal
Immunogen:	Synthetic peptide corresponding to C-terminus of human Grb2 (amino acids 198-217)
Specificity:	This antibody recognizes Grb2, a highly conserved approximately 26 kDa adaptor protein.
Formulation:	Phosphate buffered saline (PBS) containing 15 mM sodium azide and 0.2% (w/v) high-grade protease free Bovine Serum Albumin (BSA) as a stabilizing agent State: Aff - Purified State: Liquid Ig fraction
Concentration:	lot specific
Purification:	Immunoaffinity chromatography
Conjugation:	Unconjugated
Storage:	Store the antibody at 2 °C to 8 °C up to one month or (in aliquots) at -20 °C to -70 °C for longer. Avoid repeated freezing and thawing.
Stability:	Shelf life: one year from despatch.
Gene Name:	growth factor receptor bound protein 2
Database Link:	Entrez Gene 2885 Human P62993
Background:	Grb2 (growth factor receptor-bound protein 2) is a highly conserved adaptor protein composed of central SH2 domain flanked by two terminal SH3 domains. Grb2 mediates coupling of receptor protein tyrosine kinases to a guanine nucleotide exchange factor Sos, thereby enabling the tyrosine kinases to stimulate activity of Ras and hence of MAP kinase pathway. Grb2 also can bind to receptor protein tyrosine phosphatases and affect their signaling.



[View online »](#)

Synonyms: Growth factor receptor-bound protein 2

Product images:



Western Blotting analysis (reducing conditions) of Ramos cell lysate using two batches of rabbit anti-Grb2 polyclonal (A, B).