

Product datasheet for **AP03011PU-N**

esxA Rabbit Polyclonal Antibody

Product data:

Product Type:	Primary Antibodies
Applications:	WB
Recommended Dilution:	Western Blotting (Reducing conditions): 0.2-1 µg/ml.
Reactivity:	Mycobacterium tuberculosis
Host:	Rabbit
Clonality:	Polyclonal
Immunogen:	EsaT-6 (Rv3875) of <i>Mycobacterium tuberculosis</i> .
Specificity:	This polyclonal antibody reacts with EsaT-6, a 11,8 kDa antigen encoded by gene Rv3875 of <i>Mycobacterium tuberculosis</i> . The antibody recognizes EsaT-6 of <i>Mycobacterium tuberculosis H37Rv</i> and <i>Mycobacterium bovis</i> . It reacts also with recombinant antigen produced in <i>Escherichia coli</i> .
Formulation:	PBS, pH~7.4 State: Aff - Purified State: Liquid purified IgG fraction (> 95% pure by SDS-PAGE) Preservative: 15 mM Sodium Azide
Concentration:	lot specific
Purification:	Affinity Chromatography on Protein A
Conjugation:	Unconjugated
Storage:	Store undiluted at 2-8°C. DO NOT FREEZE!
Stability:	Shelf life: one year from despatch.
Database Link:	POA564
Background:	The ESAT6 antigen from <i>Mycobacterium tuberculosis</i> is a dominant target for cell mediated immunity in the early phase of tuberculosis (TB) in TB patients as well as in various animal models. ESAT6 is not found in M. bovis BCG. Its function is not known but it elicits high level of IFN-gamma from memory effector cells during the first phase of a protective immune response.
Synonyms:	esxA, esaT-6, Rv3875, MT3989, MTV027.10



[View online »](#)

Product images:

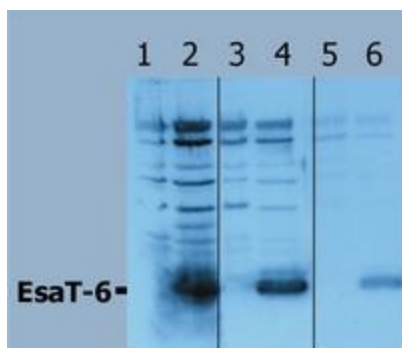


Figure 1. Western Blotting analysis (reducing conditions) of recombinant protein EsaT-6 using polyclonal anti-EsaT-6 antibody (AP03011PU-N): Lane 1, 3, 5: cell lysates of non-transfected *E. coli* (Negative Controls). Lane 2, 4, 6: Cell