

## Product datasheet for **AP03010PU-N**

### esxB Rabbit Polyclonal Antibody

#### Product data:

Product Type:	Primary Antibodies
Applications:	WB
Recommended Dilution:	Suitable for Western Blotting under Reducing conditions: 0.2-1 µg/ml.
Reactivity:	Mycobacterium tuberculosis
Host:	Rabbit
Clonality:	Polyclonal
Immunogen:	CFP10 (Rv3874) of Mycobacterium tuberculosis
Specificity:	The polyclonal antibody reacts with CFP10 (LHP), a 12,3 kDa antigen encoded by gene Rv3874 of Mycobacterium tuberculosis. The antibody recognizes CFP10 of Mycobacterium tuberculosis H37Rv and Mycobacterium bovis; it reacts also with recombinant antigen produced in Escherichia coli.
Formulation:	PBS, pH 7.4 with 15 mM sodium azide as preservative. State: Aff - Purified State: Liquid purified IgG fraction (> 95% pure by SDS-PAGE).
Concentration:	lot specific
Purification:	Protein-A affinity chromatography.
Conjugation:	Unconjugated
Storage:	Store undiluted at 2-8°C. <b>DO NOT FREEZE!</b>
Stability:	Shelf life: one year from despatch.
Database Link:	<a href="#">P0A566</a>
Background:	CFP10 (10 kDa culture filtrate protein) is a low molecular weight protein isolated from Mycobacterium tuberculosis culture filtrates. CFP10 and the 6 kDa early secretory antigen of T cells (ESAT6) are secreted in abundance by Mycobacterium tuberculosis and are frequently recognized by T cells from infected people. The genes encoding these proteins have been deleted from the genome of the vaccine strain Bacille Calmette Guerin (BCG). CFP10 is one of a small number of secreted M. tuberculosis proteins now identified, that appear to play key roles in tuberculosis pathogenesis and in the stimulation of immunity.



[View online »](#)

Synonyms: lhp, mtsA10, Rv3874, MT3988, MTV027.09

**Product images:**

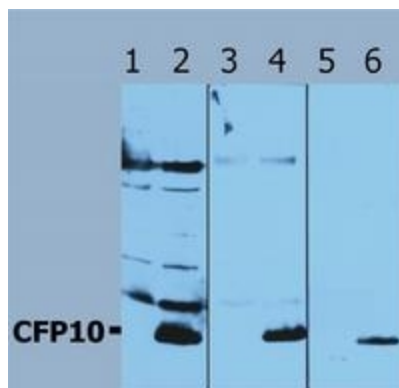


Figure 1. Western Blotting analysis (reducing conditions) of recombinant protein CFP10 using polyclonal anti-CFP10 antibody (AP03010PU-N): Lane 1, 3, 5: cell lysates of non-transfected E. coli (negative controls). Lane 2, 4, 6: cell lysate of CFP10-transfe